

# Recombinant Human KCMF1 Protein, Myc/DDK-tagged, C13 and N15-labeled

**Cat. No.** KCMF1-490H    **Lot. No.** (See product label)

## SPECIFICATION

<b>Product Overview</b>	KCMF1 MS Standard C13 and N15-labeled recombinant protein (NP_064507) with a C-terminal MYC/DDK tag, was expressed in HEK293 cells.
<b>Species</b>	Human
<b>Source</b>	HEK293
<b>Description</b>	Has intrinsic E3 ubiquitin ligase activity and promotes ubiquitination.
<b>Molecular Mass</b>	41.9 kDa
<b>AA Sequence</b>	MSRHEGVSCDACLKGNFRGRRYKCLICYDYDLASCYESGATTTTRHTTDHPMQCIL TRVDFDLYYGGEAFSVEQPQSFTCPYCGKMGYTETSLQEHTVSEHAETSTEVICPIC AALPGGDPNHVTDDFAAHLTLEHRAPRDLDESSGVRHVRRMFHPGRGLGGPRARR SNMHFTSSSTGGLSSSQSSYSPSNREAMDPIAELLSQLSGVRRSAGGQLNSSGPSA SQLQQLQMLQLERQHAQAARQLETARNATRRNTSSVTTTITQSTATTNIANTES SQQTLQNSQFLTRLNDPKMSETERQSMESERADRSFLVQELLSTLVREESSSSD EDDRGEMADFGAMGCVDIMPLDVALENLNLKESNKGNEPPPPPLTRTRPLEQKLIS EEDLAANDILDYKDDDDKV
<b>Purity</b>	> 80% as determined by SDS-PAGE and Coomassie blue staining
<b>Stability</b>	Stable for 3 months from receipt of products under proper storage and handling conditions.

 Tel: 1-631-559-9269    1-516-512-3133

 Email: [info@creative-biomart.com](mailto:info@creative-biomart.com)     Fax: 1-631-938-8127

 45-1 Ramsey Road, Shirley, NY 11967, USA

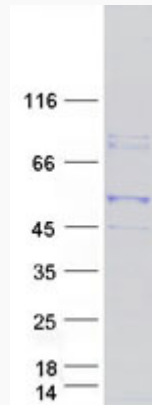
<b>Storage</b>	Store at -80 centigrade. Avoid repeated freeze-thaw cycles.
<b>Concentration</b>	50 µg/mL as determined by BCA
<b>Storage Buffer</b>	100 mM glycine, 25 mM Tris-HCl, pH 7.3.
<b>GENE INFORMATION</b>	
<b>Gene Name</b>	KCMF1 potassium channel modulatory factor 1 [ Homo sapiens (human) ]
<b>Official Symbol</b>	KCMF1
<b>Synonyms</b>	KCMF1; potassium channel modulatory factor 1; FIGC; PCMF; ZZZ1; DEBT91; E3 ubiquitin-protein ligase KCMF1; FGF-induced in gastric cancer; FGF-induced ubiquitin-protein ligase in gastric cancers; RING-type E3 ubiquitin transferase KCMF1; ZZ-type zinc finger-containing protein 1; differentially expressed in branching tubulogenesis 91; zinc finger, ZZ domain containing 1; EC 2.3.2.27
<b>Gene ID</b>	56888
<b>mRNA Refseq</b>	NM_020122
<b>Protein Refseq</b>	NP_064507
<b>MIM</b>	614719
<b>UniProt ID</b>	Q9P0J7

 Tel: 1-631-559-9269 1-516-512-3133

 Email: [info@creative-biomart.com](mailto:info@creative-biomart.com)  Fax: 1-631-938-8127

 45-1 Ramsey Road, Shirley, NY 11967, USA

**SDS-PAGE**



 Tel: 1-631-559-9269 1-516-512-3133

 Email: [info@creative-biomart.com](mailto:info@creative-biomart.com)  Fax: 1-631-938-8127

 45-1 Ramsey Road, Shirley, NY 11967, USA