

Recombinant Human KCNAB2 Protein (1-367 aa), His-SUMO-tagged

Cat. No. KCNAB2-593H Lot. No. (See product label)

SPECIFICATION

Product Overview Recombinant Human KCNAB2 Protein (1-367 aa) is produced by E. coli expression system. This protein is fused with a 6xHis-SUMO tag at the N-terminal. Research Area: Neuroscience. Protein Description: Full Length.

Species Human

Source E.coli

ProteinLength 1-367 aa

Description Cytoplasmic domain potassium channel subunit that modulates the characteristics of the channel-forming alpha-subunits . Contributes to the regulation of nerve signaling, and prevents neuronal hyperexcitability . Promotes expression of the pore-forming alpha subunits at the cell mbrane, and thereby increases channel activity . Promotes potassium channel closure via a mechanism that does not involve physical obstruction of the channel pore . Promotes KCNA4 channel closure . Modulates the functional properties of KCNA5 . Enhances KCNB2 channel activity . Binds NADPH and has NADPH-dependent aldo-ketoreductase activity . Has broad substrate specificity and can catalyze the reduction of methylglyoxal, 9,10-phenanthrenequinone, prostaglandin J2, 4-nitrobenzaldehyde, 4-nitroacetophenone and 4-oxo-trans-2-nonenal (in vitro).

Form Tris-based buffer, 50% glycerol

 Tel: 1-631-559-9269 1-516-512-3133

 Email: info@creative-biomart.com  Fax: 1-631-938-8127

 45-1 Ramsey Road, Shirley, NY 11967, USA

Molecular Mass	57.0 kDa
AA Sequence	<p> MYPESTTGSPARLSLRQTGSPGMIYSTRYGSPKRQLQFYRNLGKSGLRVSCGLGLGT WVTFGGQITDEMAEQLMTLAYDNGINLFDTAEVYAAGKAEVVLGNIIKKKGWRRSSL VITTKIFWGGKAETERGLSRKHIIIEGLKASLERLQLEYVDVVFANRPDPNTPMEETVR AMTHVINQGMAMYWGTSRWSSMEIMEAYSVARQFNLTTPICEQAEYHMFQREKVE VQLPELFHKIGVGMAMTWSPLACGIVSGKYDSGIPPYSRASLKG YQWLKDKILSEEGR RQQAKLKELQAI AERLGCTLPQLAI AWCLRNEGVS SVLLGASNADQLMENIGAIQVLP KLSSSIIHEIDSILGNKPYSKKDYRS </p>
Purity	> 90% as determined by SDS-PAGE.
Notes	Repeated freezing and thawing is not recommended. Store working aliquots at 4 centigrade for up to one week.
Storage	The shelf life is related to many factors, storage state, buffer ingredients, storage temperature and the stability of the protein itself. Generally, the shelf life of liquid form is 6 months at -20 centigrade/-80 centigrade. The shelf life of lyophilized form is 12 months at -20 centigrade/-80 centigrade.
Concentration	A hardcopy of COA with concentration instruction is sent along with the products.

GENE INFORMATION

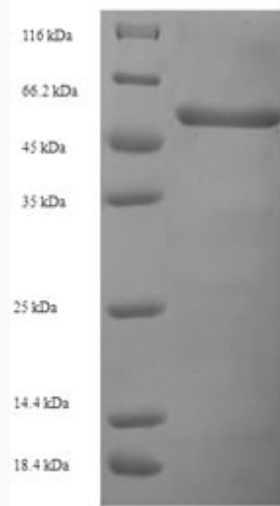
Gene Name	KCNAB2 potassium voltage-gated channel, shaker-related subfamily, beta member 2 [Homo sapiens]
Official Symbol	KCNAB2
Synonyms	KCNAB2; AKR6A5; HKvbeta2.1; HKvbeta2.2; KCNA2B; HKvbeta2; KV-BETA-2; MGC117289;

 Tel: 1-631-559-9269 1-516-512-3133

 Email: info@creative-biomart.com  Fax: 1-631-938-8127

 45-1 Ramsey Road, Shirley, NY 11967, USA

Gene ID	8514
mRNA Refseq	NM_001199860
Protein Refseq	NP_001186789
MIM	601142
UniProt ID	Q13303



(Tris-Glycine gel) Discontinuous SDS-PAGE (reduced) with 5% enrichment gel and 15% separation gel.

Tel: 1-631-559-9269 1-516-512-3133

Email: info@creative-biomart.com Fax: 1-631-938-8127

45-1 Ramsey Road, Shirley, NY 11967, USA