

Recombinant Human KCNAB2 Protein, Myc/DDK-tagged, C13 and N15-labeled

Cat. No. KCNAB2-6001H **Lot. No.** (See product label)

SPECIFICATION

Product Overview

KCNAB2 MS Standard C13 and N15-labeled recombinant protein (NP_003627) with a C-terminal MYC/DDK tag, was expressed in HEK293 cells.

Species

Human

Source

HEK293

Description

Voltage-gated potassium (Kv) channels represent the most complex class of voltage-gated ion channels from both functional and structural standpoints. Their diverse functions include regulating neurotransmitter release, heart rate, insulin secretion, neuronal excitability, epithelial electrolyte transport, smooth muscle contraction, and cell volume. Four sequence-related potassium channel genes - shaker, shaw, shab, and shal - have been identified in Drosophila, and each has been shown to have human homolog(s). This gene encodes a member of the potassium channel, voltage-gated, shaker-related subfamily. This member is one of the beta subunits, which are auxiliary proteins associating with functional Kv-alpha subunits. This member alters functional properties of the KCNA4 gene product. Alternative splicing of this gene results in multiple transcript variants encoding distinct isoforms.

Molecular Mass

41 kDa

AA Sequence

MYPESTTGSPARLSLRQTGSPGMIYSTRYGSPKRQLQFYRNLGKSGLRVSCGLGLGT
WVTFGGQITDEMAEQLMTLAYDNGINLFDTAEVYAAGKAEVVLGNIIKKKGWRRSSL

 Tel: 1-631-559-9269 1-516-512-3133

 Email: info@creative-biomart.com  Fax: 1-631-938-8127

 45-1 Ramsey Road, Shirley, NY 11967, USA

VITTKIFWGGKAETERGLSRKHIIIEGLKASLERLQLEYVDVVFANRPDPNTPMEETVR
 AMTHVINQGMAMYWGTSRWSSMEIMEAYSVARQFNLTTPICEQAEYHMFQREKVE
 VQLPELFHKIGVGMAMTWSPLACGIVSGKYDSGIPPYSRASLKGQWLKDKILSEEGR
 RQQAKLKELQAIERLGCTLPQLAIWCLRNEGVSSVLLGASNADQLMENIGAIQVLP
 KLSSSIIHEIDSILGNKPYSKKDYRSTRTRPLEQKLISEEDLAANDILDYKDDDDKV

Purity > 80% as determined by SDS-PAGE and Coomassie blue staining

Stability Stable for 3 months from receipt of products under proper storage and handling conditions.

Storage Store at -80 centigrade. Avoid repeated freeze-thaw cycles.

Concentration 50 µg/mL as determined by BCA

Storage Buffer 100 mM glycine, 25 mM Tris-HCl, pH 7.3.

GENE INFORMATION

Gene Name [KCNAB2 potassium voltage-gated channel subfamily A regulatory beta subunit 2 \[Homo sapiens \(human\) \]](#)

Official Symbol [KCNAB2](#)

Synonyms KCNAB2; potassium voltage-gated channel, shaker-related subfamily, beta member 2; voltage-gated potassium channel subunit beta-2; AKR6A5; HKvbeta2.1; HKvbeta2.2; KCNA2B; K+ channel beta-2 subunit; K(+) channel subunit beta-2; potassium channel shaker chain beta 2; HKvbeta2; KV-BETA-2; MGC117289;

Gene ID [8514](#)

 Tel: 1-631-559-9269 1-516-512-3133

 Email: info@creative-biomart.com  Fax: 1-631-938-8127

 45-1 Ramsey Road, Shirley, NY 11967, USA

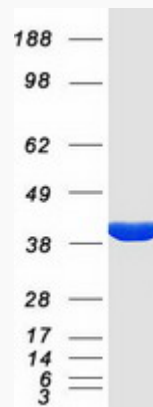
mRNA Refseq [NM_003636](#)

Protein Refseq [NP_003627](#)

MIM [601142](#)

UniProt ID [Q13303](#)

SDS-PAGE



 Tel: 1-631-559-9269 1-516-512-3133

 Email: info@creative-biomart.com  Fax: 1-631-938-8127

 45-1 Ramsey Road, Shirley, NY 11967, USA