

Recombinant Human KCNAB3 Protein, Myc/DDK-tagged, C13 and N15-labeled

Cat. No. KCNAB3-6430H **Lot. No.** (See product label)

SPECIFICATION

Product Overview

KCNAB3 MS Standard C13 and N15-labeled recombinant protein (NP_004723) with a C-terminal MYC/DDK tag, was expressed in HEK293 cells.

Species

Human

Source

HEK293

Description

This gene encodes a member of the potassium channel, voltage-gated, shaker-related subfamily. The encoded protein is one of the beta subunits, which are auxiliary proteins associating with functional Kv-alpha subunits. The encoded protein forms a heterodimer with the potassium voltage-gated channel, shaker-related subfamily, member 5 gene product and regulates the activity of the alpha subunit.

Molecular Mass

43.7 kDa

AA Sequence

MQVSIACTEQNLRSRSEDRLCGPRPGPGGGNGGPAGGGHGNPPGGGGSGPKA
 RAALVPRPPAPAGALRESTGRGTGMKYRNLGKSGLRVSLGLGTWVTFGSQISDET
 AEDVLTVAYEHGVNLFDTAEVYAAGKAERTLGNILKSKGWRRSSYVITTKIFWGGQA
 ETERGLSRKHIIIEGLRGLERLQLGYVDIVFANRSDPNCPMEEIVRAMTYVINQGLAL
 YWGTSRWGAAEIMEAYS MARQFNLI PPVCEQAEHHLFQREKVEMQLPELYHKIGVG
 SVTWYPLACGLITSKYDGRVPDTCRASIKGYQWLKDKVQSEDGKKQQA KVM DLLPV
 AHQLGCTVAQLAI AWCLRSEGVSSVLLGVSSAEQLIEHLGALQVLSQLTPQTVM EID
 GLLGNKPHSKKTRTRPLEQKLISEEDLAANDILDYKDDDDKV

 Tel: 1-631-559-9269 1-516-512-3133

 Email: info@creative-biomart.com  Fax: 1-631-938-8127

 45-1 Ramsey Road, Shirley, NY 11967, USA

Purity	> 80% as determined by SDS-PAGE and Coomassie blue staining
Stability	Stable for 3 months from receipt of products under proper storage and handling conditions.
Storage	Store at -80 centigrade. Avoid repeated freeze-thaw cycles.
Concentration	50 µg/mL as determined by BCA
Storage Buffer	100 mM glycine, 25 mM Tris-HCl, pH 7.3.

GENE INFORMATION

Gene Name	KCNAB3 potassium voltage-gated channel subfamily A regulatory beta subunit 3 [Homo sapiens (human)]
Official Symbol	KCNAB3
Synonyms	KCNAB3; potassium voltage-gated channel subfamily A regulatory beta subunit 3; AKR6A9; KCNA3B; KCNA3.1B; KV-BETA-3; voltage-gated potassium channel subunit beta-3; K(+) channel subunit beta-3; potassium channel, voltage gated subfamily A regulatory beta subunit 3; potassium channel, voltage-dependent, beta-3 subunit; potassium voltage-gated channel, shaker-related subfamily, beta member 3
Gene ID	9196
mRNA Refseq	NM_004732
Protein Refseq	NP_004723
MIM	604111

 Tel: 1-631-559-9269 1-516-512-3133

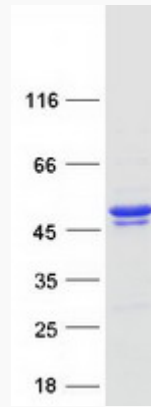
 Email: info@creative-biomart.com  Fax: 1-631-938-8127

 45-1 Ramsey Road, Shirley, NY 11967, USA

UniProt ID

O43448

SDS-PAGE



 Tel: 1-631-559-9269 1-516-512-3133

 Email: info@creative-biomart.com  Fax: 1-631-938-8127

 45-1 Ramsey Road, Shirley, NY 11967, USA