

Recombinant Human KCNE2 Full Length Transmembrane protein, His-tagged

Cat. No. KCNE2-240H Lot. No. (See product label)

SPECIFICATION

Product Overview	Recombinant Human KCNE2 protein, fused to His-tag, was expressed in E.coli and purified by Ni-sepharose.
Species	Human
Source	E.coli
ProteinLength	1-123aa
Form	<p>If the delivery form is liquid, the default storage buffer is Tris/PBS-based buffer, 5%-50% glycerol.</p> <p>If the delivery form is lyophilized powder, the buffer before lyophilization is Tris/PBS-based buffer, 6% Trehalose, pH 8.0.</p>
Molecular Mass	17.3 kDa
AA Sequence	MSTLSNFTQTLEDVFRIRIFITYMDNWRQNTTAEQEALQAKVDAENFYVILYLMVMI GMFSFIIVAILVSTVKSKRREHSNDPYHQYIVEDWQEKYKSQILNLEESKATIHENIGA AGFKMSP
Purity	Greater than 90% as determined by SDS-PAGE.
Storage	Store at -20°C/-80°C upon receipt, aliquoting is necessary for mutiple use. Avoid repeated freeze-thaw cycles.

 Tel: 1-631-559-9269 1-516-512-3133

 Email: info@creative-biomart.com  Fax: 1-631-938-8127

 45-1 Ramsey Road, Shirley, NY 11967, USA

Reconstitution

Please reconstitute protein in deionized sterile water to a concentration of 0.1-1.0 mg/mL. We recommend to add 5-50% of glycerol (final concentration) and aliquot for long-term storage at -20°C/-80°C. Our default final concentration of glycerol is 50%.

GENE INFORMATION

Gene Name

KCNE2 potassium voltage-gated channel, Isk-related family, member 2 [Homo sapiens]

Official Symbol

KCNE2

Synonyms

KCNE2; potassium voltage-gated channel, Isk-related family, member 2; potassium voltage-gated channel subfamily E member 2; MiRP1; minK-related peptide 1; minK-related peptide-1; potassium channel subunit, MiRP1; potassium channel subunit beta MiRP1; voltage-gated K⁺ channel subunit MIRP1; minimum potassium ion channel-related peptide 1; cardiac voltage-gated potassium channel accessory subunit 2; LQT5; LQT6; ATFB4; MIRP1; MGC138292;

Gene ID

9992

mRNA Refseq

NM_172201

Protein Refseq

NP_751951

MIM

603796

UniProt ID

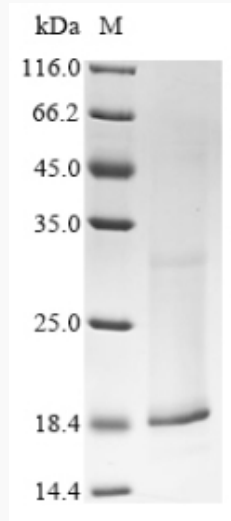
Q9Y6J6

 Tel: 1-631-559-9269 1-516-512-3133

 Email: info@creative-biomart.com  Fax: 1-631-938-8127

 45-1 Ramsey Road, Shirley, NY 11967, USA

SDS-PAGE



 Tel: 1-631-559-9269 1-516-512-3133

 Email: info@creative-biomart.com  Fax: 1-631-938-8127

 45-1 Ramsey Road, Shirley, NY 11967, USA