

# Recombinant Human KCNE2 Protein, Myc/DDK-tagged, C13 and N15-labeled

Cat. No. KCNE2-2853H Lot. No. (See product label)

## SPECIFICATION

<b>Product Overview</b>	KCNE2 MS Standard C13 and N15-labeled recombinant protein (NP_751951) with a C-terminal MYC/DDK tag, was expressed in HEK293 cells.
<b>Species</b>	Human
<b>Source</b>	HEK293
<b>Description</b>	Voltage-gated potassium (Kv) channels represent the most complex class of voltage-gated ion channels from both functional and structural standpoints. Their diverse functions include regulating neurotransmitter release, heart rate, insulin secretion, neuronal excitability, epithelial electrolyte transport, smooth muscle contraction, and cell volume. This gene encodes a member of the potassium channel, voltage-gated, Isk-related subfamily. This member is a small integral membrane subunit that assembles with the KCNH2 gene product, a pore-forming protein, to alter its function. This gene is expressed in heart and muscle and the gene mutations are associated with cardiac arrhythmia.
<b>Molecular Mass</b>	14.5 kDa
<b>AA Sequence</b>	MSTLSNFTQTLEDVFRRIFITYMDNWRQNTTAEQEALQAKVDAENFYVILYLMVMI GMFSFIIVAILVSTVKSKRREHSNDPYHQYIVEDWQEKYKSQILNLEESKATIHENIGA AGFKMSPTRTRPLEQKLISEEDLAANDILDYKDDDDKV
<b>Purity</b>	> 80% as determined by SDS-PAGE and Coomassie blue staining

 Tel: 1-631-559-9269 1-516-512-3133

 Email: [info@creative-biomart.com](mailto:info@creative-biomart.com)  Fax: 1-631-938-8127

 45-1 Ramsey Road, Shirley, NY 11967, USA

<b>Stability</b>	Stable for 3 months from receipt of products under proper storage and handling conditions.
<b>Storage</b>	Store at -80 centigrade. Avoid repeated freeze-thaw cycles.
<b>Concentration</b>	50 µg/mL as determined by BCA
<b>Storage Buffer</b>	100 mM glycine, 25 mM Tris-HCl, pH 7.3.

## GENE INFORMATION

<b>Gene Name</b>	KCNE2 potassium voltage-gated channel subfamily E regulatory subunit 2 [ Homo sapiens (human) ]
<b>Official Symbol</b>	KCNE2
<b>Synonyms</b>	KCNE2; potassium voltage-gated channel, Isk-related family, member 2; potassium voltage-gated channel subfamily E member 2; MiRP1; minK-related peptide 1; minK-related peptide-1; potassium channel subunit, MiRP1; potassium channel subunit beta MiRP1; voltage-gated K <sup>+</sup> channel subunit MIRP1; minimum potassium ion channel-related peptide 1; cardiac voltage-gated potassium channel accessory subunit 2; LQT5; LQT6; ATFB4; MIRP1; MGC138292;
<b>Gene ID</b>	9992
<b>mRNA Refseq</b>	NM_172201
<b>Protein Refseq</b>	NP_751951
<b>MIM</b>	603796

 Tel: 1-631-559-9269 1-516-512-3133

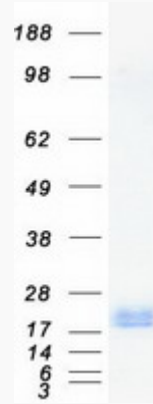
 Email: [info@creative-biomart.com](mailto:info@creative-biomart.com)  Fax: 1-631-938-8127

 45-1 Ramsey Road, Shirley, NY 11967, USA

UniProt ID

Q9Y6J6

SDS-PAGE



 Tel: 1-631-559-9269 1-516-512-3133

 Email: [info@creative-biomart.com](mailto:info@creative-biomart.com)  Fax: 1-631-938-8127

 45-1 Ramsey Road, Shirley, NY 11967, USA