

Recombinant Human KCNIP1 protein, GST-tagged

Cat. No. KCNIP1-5643H **Lot. No.** (See product label)

SPECIFICATION

Product Overview	Recombinant Human KCNIP1 protein(1-216 aa), fused with N-terminal GST tag, was expressed in E. coli.
Species	Human
Source	E. coli
ProteinLength	1-216 aa
Form	The purified protein was lyophilized from sterile phosphate-buffered saline (PBS: 58 mM Na ₂ HPO ₄ , 17 mM NaH ₂ PO ₄ , 68 mM NaCl, pH 8.0). Prior to lyophilization, 5% (w/v) trehalose and 5% (w/v) mannitol were incorporated as cryoprotective excipients. The protein was eluted with a buffer containing 100 mM reduced glutathione (GSH).
AASequence	MGAVMGTFSSLQTKQRRPSKDKIEDELEMTMVCHRPEGLEQLEAQTNFTKRELQVL YRGFKNECPSGVVNEDTFKQIYAQFFPHGDASTYAHYLFNAFDTTQTGSKVFEDFV TALSILLRGTVHEKLRWTFNLYDINKDGYINKEEMMDIVKAIYDMMGKYTYPVLKEDT PRQHVDVFFQKMDKNKDGIVTLDEFLESCQEDDNIMRSLQLFQNVN
Purity	85%, by SDS-PAGE.
Storage	Store at 2-8°C for 1-2 weeks. Aliquot and store at -20°C to -80°C for up to 3 months, reconstitution with sterile water and addition of an equal volume of glycerol. Avoid repeat freeze-thaw cycles.

 Tel: 1-631-559-9269 1-516-512-3133

 Email: info@creative-biomart.com  Fax: 1-631-938-8127

 45-1 Ramsey Road, Shirley, NY 11967, USA

Reconstitution It is recommended that sterile water be added to the vial to prepare a stock solution of 0.25 ug/ul. Centrifuge the vial at 4°C before opening to recover the entire contents.

GENE INFORMATION

Gene Name [KCNIP1 Kv channel interacting protein 1 \[Homo sapiens \]](#)

Official Symbol [KCNIP1](#)

Synonyms KCNIP1; Kv channel interacting protein 1; Kv channel-interacting protein 1; KCHIP1; vesicle APC-binding protein; potassium channel interacting protein 1; potassium channel-interacting protein 1; A-type potassium channel modulatory protein 1; VABP; MGC95;

mRNA Refseq [NM_001034837](#)

Protein Refseq [NP_001030009](#)

MIM [604660](#)

UniProt ID [Q9NZI2](#)

Gene ID [30820](#)

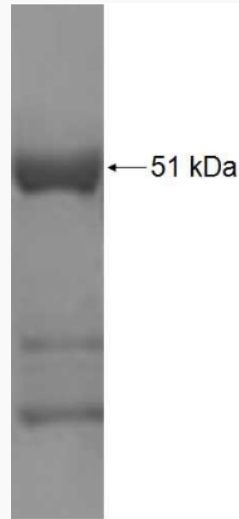
 Tel: 1-631-559-9269 1-516-512-3133

 Email: info@creative-biomart.com  Fax: 1-631-938-8127

 45-1 Ramsey Road, Shirley, NY 11967, USA



SDS-PAGE



☎ Tel: 1-631-559-9269 1-516-512-3133

☎ Email: info@creative-biomart.com ☎ Fax: 1-631-938-8127

☎ 45-1 Ramsey Road, Shirley, NY 11967, USA