

Recombinant Human KCNJ1 Protein (178-391 aa), His-tagged

Cat. No. KCNJ1-596H **Lot. No.** (See product label)

SPECIFICATION

Product Overview	Recombinant Human KCNJ1 Protein (178-391 aa) is produced by E. coli expression system. This protein is fused with a 6xHis tag at the N-terminal. Research Area: Signal Transduction. Protein Description: Partial.
Species	Human
Source	E.coli
ProteinLength	178-391 aa
Description	In the kidney, probably plays a major role in potassium homeostasis. Inward rectifier potassium channels are characterized by a greater tendency to allow potassium to flow into the cell rather than out of it. Their voltage dependence is regulated by the concentration of Extracellular domain potassium; as external potassium is raised, the voltage range of the channel opening shifts to more positive voltages. The inward rectification is mainly due to the blockage of outward current by internal magnesium. This channel is activated by internal ATP and can be blocked by external barium.
Form	Tris-based buffer, 50% glycerol
Molecular Mass	28.3 kDa
AA Sequence	ILAKISRPKKRAKTITFSKNAVISKRGGKLCLLIRVANLRKSLIGSHIYGKLLKTTVTPE GETIILDQININFVVDAGNENLFFISPLTIYHVIDHNSPFFHMAAETLLQQDFELVVFLD GTVESTSATCQVRTSYVPEEVLWG YRFAPIVSKTKEGKYRVDFHNF SKTVEVETPH

 Tel: 1-631-559-9269 1-516-512-3133

 Email: info@creative-biomart.com  Fax: 1-631-938-8127

 45-1 Ramsey Road, Shirley, NY 11967, USA

CAMCLYNEKDVRARMKRGYDNPINFILSEVNETDDTKM

Purity > 90% as determined by SDS-PAGE.

Notes Repeated freezing and thawing is not recommended. Store working aliquots at 4 centigrade for up to one week.

Storage The shelf life is related to many factors, storage state, buffer ingredients, storage temperature and the stability of the protein itself. Generally, the shelf life of liquid form is 6 months at -20 centigrade/-80 centigrade. The shelf life of lyophilized form is 12 months at -20 centigrade/-80 centigrade.

Concentration A hardcopy of COA with concentration instruction is sent along with the products.

GENE INFORMATION

Gene Name [KCNJ1 potassium inwardly-rectifying channel, subfamily J, member 1 \[Homo sapiens \]](#)

Official Symbol [KCNJ1](#)

Synonyms [KCNJ1](#); [Kir1.1](#); [ROMK1](#); [ROMK](#); [KIR1.1](#);

Gene ID [3758](#)

mRNA Refseq [NM_000220](#)

Protein Refseq [NP_000211](#)

MIM [600359](#)

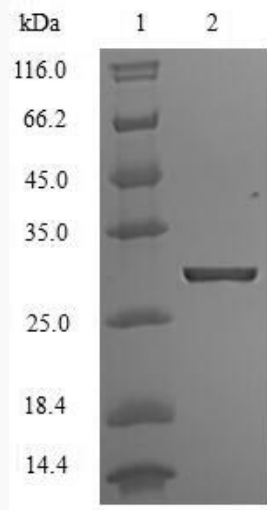
 Tel: 1-631-559-9269 1-516-512-3133

 Email: info@creative-biomart.com  Fax: 1-631-938-8127

 45-1 Ramsey Road, Shirley, NY 11967, USA

UniProt ID

P48048



(Tris-Glycine gel) Discontinuous SDS-PAGE (reduced) with 5% enrichment gel and 15% separation gel.

 Tel: 1-631-559-9269 1-516-512-3133

 Email: info@creative-biomart.com  Fax: 1-631-938-8127

 45-1 Ramsey Road, Shirley, NY 11967, USA