

# Recombinant Human KCNJ16 Full Length Transmembrane protein, His-tagged

Cat. No. KCNJ16-948H Lot. No. (See product label)

## SPECIFICATION

<b>Product Overview</b>	Recombinant Human KCNJ16 protein(Q9NPI9)(1-418aa), fused with N-terminal His tag, was expressed in in vitro E. coli expression system.
<b>Species</b>	Human
<b>Source</b>	E.coli
<b>ProteinLength</b>	1-418aa
<b>Form</b>	<p>If the delivery form is liquid, the default storage buffer is Tris/PBS-based buffer, 5%-50% glycerol.</p> <p>If the delivery form is lyophilized powder, the buffer before lyophilization is Tris/PBS-based buffer, 6% Trehalose, pH 8.0.</p>
<b>Molecular Mass</b>	50.8 kDa
<b>AA Sequence</b>	<p>MSYYGSSYHIINADAKYPGYPPEHIIAEKRRARRRLLHKDGCNVEYFKHIFGEWGSY  VVDIFTTLVDTKWRHMFVIFSLSYILSWLIFGSVFWLIAFHGGDLLNDPDIPTCVDNVH  SFTGAFIFSLETQTTIGYGYRCVTEECVAVLMVILQSILSCIINTFIIGAALAKMATARK  RAQTIRFSYFALIGMRDGLCLMWRIGDFRPNHVVEGTVRAQLLRYTEDSEGRMTM  AFKDLKLVNDQIILVTPVTIVHEIDHESPLYALDRKAVAKDNFEILVTFIYTG DSTGTSH  QSRSSYVPREILWGHFRFNDVLEVKRKYYKVNCLQFEQSVEVYAPFCSAKQLDWKD  QQLHIEKAPPVRESCTSDTKARRRSFSAVAIVSSCENPEETTTTSATHEYRETPYQKA  LLTLNRISVESQM</p>

 Tel: 1-631-559-9269 1-516-512-3133

 Email: [info@creative-biomart.com](mailto:info@creative-biomart.com)  Fax: 1-631-938-8127

 45-1 Ramsey Road, Shirley, NY 11967, USA

<b>Purity</b>	Greater than 85% as determined by SDS-PAGE.
<b>Storage</b>	Store at -20°C/-80°C upon receipt, aliquoting is necessary for mutiple use. Avoid repeated freeze-thaw cycles.
<b>Reconstitution</b>	Please reconstitute protein in deionized sterile water to a concentration of 0.1-1.0 mg/mL. We recommend to add 5-50% of glycerol (final concentration) and aliquot for long-term storage at -20°C/-80°C.

## GENE INFORMATION

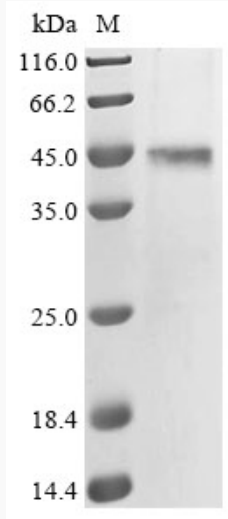
<b>Gene Name</b>	KCNJ16 potassium inwardly-rectifying channel, subfamily J, member 16 [ Homo sapiens ]
<b>Official Symbol</b>	KCNJ16
<b>Synonyms</b>	KCNJ16; potassium inwardly-rectifying channel, subfamily J, member 16; inward rectifier potassium channel 16; BIR9; Kir5.1; inward rectifier K <sup>+</sup> channel KIR5.1; inward rectifier K(+) channel Kir5.1; potassium channel, inwardly rectifying subfamily J member 16; KIR5.1; MGC33717;
<b>Gene ID</b>	3773
<b>mRNA Refseq</b>	NM_018658
<b>Protein Refseq</b>	NP_061128
<b>MIM</b>	605722
<b>UniProt ID</b>	Q9NPI9

 Tel: 1-631-559-9269 1-516-512-3133

 Email: [info@creative-biomart.com](mailto:info@creative-biomart.com)  Fax: 1-631-938-8127

 45-1 Ramsey Road, Shirley, NY 11967, USA

**SDS-PAGE**



 Tel: 1-631-559-9269 1-516-512-3133

 Email: [info@creative-biomart.com](mailto:info@creative-biomart.com)  Fax: 1-631-938-8127

 45-1 Ramsey Road, Shirley, NY 11967, USA