

Recombinant Human KCNJ6 Protein, Myc/DDK-tagged, C13 and N15-labeled

Cat. No. KCNJ6-1559H Lot. No. (See product label)

SPECIFICATION

Product Overview	KCNJ6 MS Standard C13 and N15-labeled recombinant protein (NP_002231) with a C-terminal MYC/DDK tag, was expressed in HEK293 cells.
Species	Human
Source	HEK293
Description	This gene encodes a member of the G protein-coupled inwardly-rectifying potassium channel family of inward rectifier potassium channels. This type of potassium channel allows a greater flow of potassium into the cell than out of it. These proteins modulate many physiological processes, including heart rate in cardiac cells and circuit activity in neuronal cells, through G-protein coupled receptor stimulation. Mutations in this gene are associated with Keppen-Lubinsky Syndrome, a rare condition characterized by severe developmental delay, facial dysmorphism, and intellectual disability.
Molecular Mass	48.5 kDa
AA Sequence	MAKLTESMTNVLEGDSMDQDVESPVAIHQPKLPKQARDDLPRHISRDRTRKRIQRY VRKDGKCNVHHGNVRETYRYLTDIFTTLVLDLKWRFNLLIFVMVYTVTWLFFGMIWWL IAYIRGDMDHIEDPSWTPCVTNLNGFVSAFLFSIETETTIGYGYRVITDKCPEGIILLLIQ SVLGSIVNAFMVGC MFVKISQPKKRAETLVFSTHAVISMRDGKLC LMFRVGD LRNSH IVEASIRAKLIKSKQTSEGEFIPLNQTDINVGYYTGDDRLFLV SPLIISHEINQQSPFWEI SKAQLPKEELEIVVILEGMVEATGMT CQARSSYITSEILWGYRFTPVL TLEDGFYEVD

 Tel: 1-631-559-9269 1-516-512-3133

 Email: info@creative-biomart.com  Fax: 1-631-938-8127

 45-1 Ramsey Road, Shirley, NY 11967, USA

YNSFHETYETSTPSSLAKELAEASRAELPLSWSVSSKLNQHAELETEEEEEKNLEEQ
 TERNGDVANLENESKVTRTRTRPLEQKLISEEDLAANDILDYKDDDDKV

Purity > 80% as determined by SDS-PAGE and Coomassie blue staining

Stability Stable for 3 months from receipt of products under proper storage and handling conditions.

Storage Store at -80 centigrade. Avoid repeated freeze-thaw cycles.

Concentration 50 µg/mL as determined by BCA

Storage Buffer 100 mM glycine, 25 mM Tris-HCl, pH 7.3.

GENE INFORMATION

Gene Name [KCNJ6 potassium inwardly rectifying channel subfamily J member 6 \[Homo sapiens \(human\) \]](#)

Official Symbol [KCNJ6](#)

Synonyms KCNJ6; potassium inwardly-rectifying channel, subfamily J, member 6; KCNJ7; G protein-activated inward rectifier potassium channel 2; BIR1; GIRK2; hiGIRK2; KATP2; Kir3.2; inward rectifier K(+) channel Kir3.2; inward rectifier potassium channel KIR3.2; potassium channel, inwardly rectifying subfamily J member 6; GIRK-2; KATP-2; KIR3.2; MGC126596;

Gene ID [3763](#)

mRNA Refseq [NM_002240](#)

 Tel: 1-631-559-9269 1-516-512-3133

 Email: info@creative-biomart.com  Fax: 1-631-938-8127

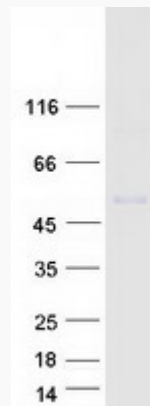
 45-1 Ramsey Road, Shirley, NY 11967, USA

Protein Refseq NP_002231

MIM 600877

UniProt ID P48051

SDS-PAGE



 Tel: 1-631-559-9269 1-516-512-3133

 Email: info@creative-biomart.com  Fax: 1-631-938-8127

 45-1 Ramsey Road, Shirley, NY 11967, USA