

Recombinant Human KCNJ6 protein, GST-tagged

Cat. No. KCNJ6-6755H Lot. No. (See product label)

SPECIFICATION

Product Overview	Recombinant Human KCNJ6 protein(351-423 aa), fused with N-terminal GST tag, was expressed in E. coli.
Species	Human
Source	E. coli
ProteinLength	351-423 aa
Form	The purified protein was lyophilized from sterile phosphate-buffered saline (PBS: 58 mM Na ₂ HPO ₄ , 17 mM NaH ₂ PO ₄ , 68 mM NaCl, pH 8.0). Prior to lyophilization, 5% (w/v) trehalose and 5% (w/v) mannitol were incorporated as cryoprotective excipients. The protein was eluted with a buffer containing 100 mM reduced glutathione (GSH).
AASequence	YNSFHETYETSTPSSLAKELAEASRAELPLSWSVSSKLNQHAETEETEEEEKNLEEQ TERNGDVANLENESKV
Purity	85%, by SDS-PAGE.
Storage	Store at 2-8°C for 1-2 weeks. Aliquot and store at -20°C to -80°C for up to 3 months, reconstitution with sterile water and addition of an equal volume of glycerol. Avoid repeat freeze-thaw cycles.
Reconstitution	It is recommended that sterile water be added to the vial to prepare a stock solution of

 Tel: 1-631-559-9269 1-516-512-3133

 Email: info@creative-biomart.com  Fax: 1-631-938-8127

 45-1 Ramsey Road, Shirley, NY 11967, USA

0.25 ug/ul. Centrifuge the vial at 4°C before opening to recover the entire contents.

GENE INFORMATION

Gene Name	KCNJ6 potassium inwardly-rectifying channel, subfamily J, member 6 [Homo sapiens]
Official Symbol	KCNJ6
Synonyms	KCNJ6; potassium inwardly-rectifying channel, subfamily J, member 6; KCNJ7; G protein-activated inward rectifier potassium channel 2; BIR1; GIRK2; hiGIRK2; KATP2; Kir3.2; inward rectifier K(+) channel Kir3.2; inward rectifier potassium channel KIR3.2; potassium channel, inwardly rectifying subfamily J member 6; GIRK-2; KATP-2; KIR3.2; MGC126596;
mRNA Refseq	NM_002240
Protein Refseq	NP_002231
MIM	600877
UniProt ID	P48051
Gene ID	3763

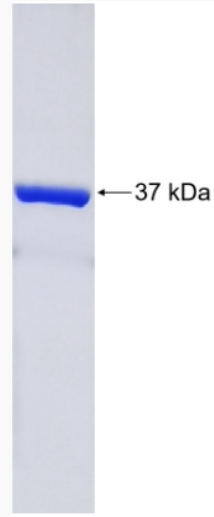
 Tel: 1-631-559-9269 1-516-512-3133

 Email: info@creative-biomart.com  Fax: 1-631-938-8127

 45-1 Ramsey Road, Shirley, NY 11967, USA



SDS-PAGE



Tel: 1-631-559-9269 1-516-512-3133

Email: info@creative-biomart.com Fax: 1-631-938-8127

45-1 Ramsey Road, Shirley, NY 11967, USA