

Recombinant Human KCNJ9 Protein, Myc/DDK-tagged, C13 and N15-labeled

Cat. No. KCNJ9-2745H Lot. No. (See product label)

SPECIFICATION

Product Overview

KCNJ9 MS Standard C13 and N15-labeled recombinant protein (NP_004974) with a C-terminal MYC/DDK tag, was expressed in HEK293 cells.

Species

Human

Source

HEK293

Description

Potassium channels are present in most mammalian cells, where they participate in a wide range of physiologic responses. The protein encoded by this gene is an integral membrane protein and inward-rectifier type potassium channel. The encoded protein, which has a greater tendency to allow potassium to flow into a cell rather than out of a cell, is controlled by G-proteins. It associates with another G-protein-activated potassium channel to form a heteromultimeric pore-forming complex.

Molecular Mass

43.8 kDa

AA Sequence

MAQENAAFSPGQEEPPRRRRGRQRYVEKDGR CNVQQGNVRETYRYLTDLFTTLVDL
 QWRLSLLFFVLAYALTWFFGAIWLIAYGRGDLEHLEDTAWTPCVNNLNGFVA AFL
 FSJETETTIGYGHRVITDQCPEGIVLLLLQAILGSMVNAFMVGC MFVKISQPNKRAATL
 VFSSHAVVSLRDGRCLCMFRVGD LRRSSHIVEASIRAKLIRSRQTLEGEFIPLHQTDLS
 VGFDTGDDRLFLVSPLVISHEIDAASPFWEASRRALERDDFEIVVILEGMVEATGMT C
 QARSSYLVD EVLWGHRFTSVLTLEDGFYEVDYASFHETFEVPTPSCSARELAEAAA
 RLDAHLYWSIPSRLDEKVEEEGAGEGAGGEAGADKEQNGCLPPPESSESKVTRTRPL

 Tel: 1-631-559-9269 1-516-512-3133

 Email: info@creative-biomart.com  Fax: 1-631-938-8127

 45-1 Ramsey Road, Shirley, NY 11967, USA

EQKLISEEDLAANDILDYKDDDDKV

Purity > 80% as determined by SDS-PAGE and Coomassie blue staining

Stability Stable for 3 months from receipt of products under proper storage and handling conditions.

Storage Store at -80 centigrade. Avoid repeated freeze-thaw cycles.

Concentration 50 µg/mL as determined by BCA

Storage Buffer 100 mM glycine, 25 mM Tris-HCl, pH 7.3.

GENE INFORMATION

Gene Name [KCNJ9 potassium inwardly rectifying channel subfamily J member 9 \[Homo sapiens \(human\) \]](#)

Official Symbol [KCNJ9](#)

Synonyms KCNJ9; potassium inwardly-rectifying channel, subfamily J, member 9; G protein-activated inward rectifier potassium channel 3; GIRK3; Kir3.3; GIRK-3; inward rectifier K(+) channel Kir3.3; inwardly rectifier K+ channel KIR3.3; G protein-coupled inward rectifier potassium channel; potassium channel, inwardly rectifying subfamily J member 9; KIR3.3;

Gene ID [3765](#)

mRNA Refseq [NM_004983](#)

Protein Refseq [NP_004974](#)

 Tel: 1-631-559-9269 1-516-512-3133

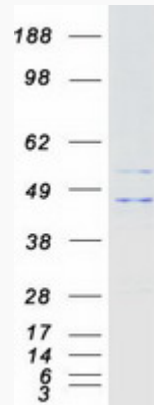
 Email: info@creative-biomart.com  Fax: 1-631-938-8127

 45-1 Ramsey Road, Shirley, NY 11967, USA

MIM 600932

UniProt ID Q92806

SDS-PAGE



 Tel: 1-631-559-9269 1-516-512-3133

 Email: info@creative-biomart.com  Fax: 1-631-938-8127

 45-1 Ramsey Road, Shirley, NY 11967, USA