

Recombinant Human KCNK13 Full Length Transmembrane protein, His-tagged

Cat. No. KCNK13-1211H Lot. No. (See product label)

SPECIFICATION

Product Overview

Recombinant Human KCNK13 protein(Q9HB14)(1-408aa), fused with N-terminal His tag, was expressed in in vitro E. coli expression system.

Species

Human

Source

E.coli

ProteinLength

1-408aa

Form

If the delivery form is liquid, the default storage buffer is Tris/PBS-based buffer, 5%-50% glycerol.
If the delivery form is lyophilized powder, the buffer before lyophilization is Tris/PBS-based buffer, 6% Trehalose, pH 8.0.

Molecular Mass

51.4 kDa

AA Sequence

MAGRGSWGPGLNEDNARFLLLAALIVLYLLGGAAVFSALELAHERQAKQRWEER
LANFSRGNLSRDELRGFLRHYYEATRAGIRVDNVRPRWDFTGAFYFVGTVVSTIG
FGMTTPATVGGKIFLIFYGLVGCSSSTILFFNFLERLITIIAYIMKSCHQRQLRRRGALP
QESLKDAGQCEVDSLQAGWKPSVYYVMLILCTASILISCCASAMYTPIEGWSYFDSL
YFCFVAFSTIGFGDLVSSQNAHYESQGLYRFANFVILMGVCCYSLFNVISILIKQSLN
WILRKMDSGCCPQCQRGLLRSRNVVMPGSRNRNRCNISIEDGVAESDTDGRRLS
GEMISMKDLAANKASLAILQKQLSEMANGCPHQTSTLARDNEFSGGVGAFAIMNN
RLAETSGDR

 Tel: 1-631-559-9269 1-516-512-3133

 Email: info@creative-biomart.com  Fax: 1-631-938-8127

 45-1 Ramsey Road, Shirley, NY 11967, USA

Purity	Greater than 85% as determined by SDS-PAGE.
Storage	Store at -20°C/-80°C upon receipt, aliquoting is necessary for mutiple use. Avoid repeated freeze-thaw cycles.
Reconstitution	Please reconstitute protein in deionized sterile water to a concentration of 0.1-1.0 mg/mL. We recommend to add 5-50% of glycerol (final concentration) and aliquot for long-term storage at -20°C/-80°C.

GENE INFORMATION

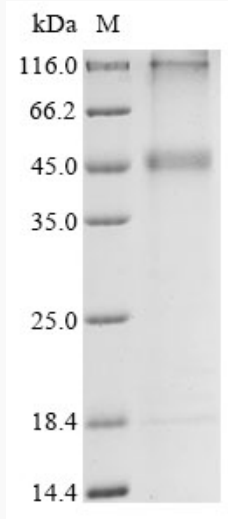
Gene Name	KCNK13 potassium channel, subfamily K, member 13 [Homo sapiens]
Official Symbol	KCNK13
Synonyms	KCNK13; potassium channel, subfamily K, member 13; potassium channel subfamily K member 13; K2p13.1; THIK 1; THIK1; K2P13.1 potassium channel; tandem pore domain potassium channel THIK-1; tandem pore domain halothane-inhibited potassium channel 1; THIK-1;
Gene ID	56659
mRNA Refseq	NM_022054
Protein Refseq	NP_071337
MIM	607367
UniProt ID	Q9HB14

 Tel: 1-631-559-9269 1-516-512-3133

 Email: info@creative-biomart.com  Fax: 1-631-938-8127

 45-1 Ramsey Road, Shirley, NY 11967, USA

SDS-PAGE



 Tel: 1-631-559-9269 1-516-512-3133

 Email: info@creative-biomart.com  Fax: 1-631-938-8127

 45-1 Ramsey Road, Shirley, NY 11967, USA