

Recombinant Human KCNK6 Protein, Myc/DDK-tagged, C13 and N15-labeled

Cat. No. KCNK6-5270H Lot. No. (See product label)

SPECIFICATION

Product Overview	KCNK6 MS Standard C13 and N15-labeled recombinant protein (NP_004814) with a C-terminal MYC/DDK tag, was expressed in HEK293 cells.
Species	Human
Source	HEK293
Description	This gene encodes one of the members of the superfamily of potassium channel proteins containing two pore-forming P domains. This channel protein, considered an open rectifier, is widely expressed. It is stimulated by arachidonic acid, and inhibited by internal acidification and volatile anaesthetics.
Molecular Mass	33.7 kDa
AA Sequence	MRRGALLAGALAAAYAAYLVLGALLVARLEGPHEARLRAELETLRAQLLQRSPCVAAP ALDAFVERVLAAGRLGRVVLANASGSANASDPAWDFASALFFASTLITTVGYGYTTP LTDAGKAFSIAFALLGVPTTMLLLTASAQRLSLLLTHVPLSWLSMRWGWDPARRAAC WHLVALLGVVVTVCFLVPAVIFAHLEEAWSFLDAFYFCFISLSTIGLGDYVPGEAPGQ PYRALYKVLVTVYFLGLVAMVLVLQTFRHVSDLHGLTELILLPPPCPASFNADEDDR VDILGPQPESHQQLSASSHTDYASIPRTRTRPLEQKLISEEDLAANDILDYKDDDDKV
Purity	> 80% as determined by SDS-PAGE and Coomassie blue staining
Stability	Stable for 3 months from receipt of products under proper storage and handling

 Tel: 1-631-559-9269 1-516-512-3133

 Email: info@creative-biomart.com  Fax: 1-631-938-8127

 45-1 Ramsey Road, Shirley, NY 11967, USA

conditions.

Storage Store at -80 centigrade. Avoid repeated freeze-thaw cycles.

Concentration 50 µg/mL as determined by BCA

Storage Buffer 100 mM glycine, 25 mM Tris-HCl, pH 7.3.

GENE INFORMATION

Gene Name KCNK6 potassium two pore domain channel subfamily K member 6 [Homo sapiens (human)]

Official Symbol KCNK6

Synonyms KCNK6; potassium channel, subfamily K, member 6; potassium channel subfamily K member 6; K2p6.1; TWIK 2; K2P6.1 potassium channel; TWIK-originated similarity sequence; TWIK-originated sodium similarity sequence; inward rectifying potassium channel protein TWIK-2; TOSS; KCNK8; TWIK2; TWIK-2; FLJ12282;

Gene ID 9424

mRNA Refseq NM_004823

Protein Refseq NP_004814

MIM 603939

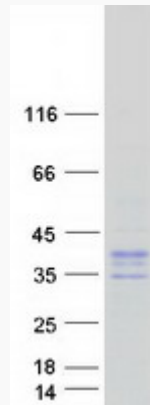
UniProt ID Q9Y257

 Tel: 1-631-559-9269 1-516-512-3133

 Email: info@creative-biomart.com  Fax: 1-631-938-8127

 45-1 Ramsey Road, Shirley, NY 11967, USA

SDS-PAGE



 Tel: 1-631-559-9269 1-516-512-3133

 Email: info@creative-biomart.com  Fax: 1-631-938-8127

 45-1 Ramsey Road, Shirley, NY 11967, USA