

## Recombinant Human KCNMB3 Protein, GST-tagged

Cat. No. KCNMB3-32H Lot. No. (See product label)

### SPECIFICATION

|                         |  |
|-------------------------|--|
| <b>Product Overview</b> | Recombinant Human KCNMB3 Protein(82-207 aa), fused with N-terminal GST tag, was expressed in E. coli.  |
| <b>Species</b>          | Human  |
| <b>Source</b>           | E.coli   |
| <b>ProteinLength</b>    | 82-207 aa  |
| <b>Form</b>             | The purified protein was Lyophilized from sterile PBS (58mM Na <sub>2</sub> HPO <sub>4</sub> , 17mM NaH <sub>2</sub> PO <sub>4</sub> , 68mM NaCl, pH8.). 5 % trehalose and 5 % mannitol are added as protectant before lyophilization. The elution buffer contain 100mM GSH. |
| <b>Storage</b>          | Short-term storage: Store at 2-8°C for (1-2 weeks). Long-term storage: Aliquot and store at -20°C to -80°C for up to 3 months, reconstitution with sterile water and addition of an equal volume of glycerol. Avoid repeat freeze-thaw cycles.                               |
| <b>AA Sequence</b>      | KPFMLSIREESTCTAIHTDIMDDWLDCAFTCGVHCHGQGKYPCLQVFNLSHPGQ<br>KALLHYNEEAVQINPKCFYTPKCHQDRNDLLNSALDIKEFFDHKNGTFFSCFYSPAS<br>QSEDVILIKKYDQ   |
| <b>Purity</b>           | 85%, by SDS-PAGE with Coomassie Brilliant Blue staining.   |

### GENE INFORMATION

 Tel: 1-631-559-9269 1-516-512-3133

 Email: [info@creative-biomart.com](mailto:info@creative-biomart.com)  Fax: 1-631-938-8127

 45-1 Ramsey Road, Shirley, NY 11967, USA

|                        |   |
|------------------------|---|
| <b>Official Symbol</b> | <b>KCNMB3</b>   |
| <b>Synonyms</b>        | KCNMB3; potassium large conductance calcium-activated channel, subfamily M beta member 3; KCNMB2, KCNMBL; calcium-activated potassium channel subunit beta-3; slo-beta-3; K(VCA)beta-3; BK channel subunit beta-3; maxi K channel subunit beta-3; charybdotoxin receptor subunit beta-3; calcium-activated potassium channel, subfamily M subunit beta-3; large conductance, voltage and Ca <sup>2+</sup> activated potassium channel Maxi K beta 3 subunit; HBETA3; KCNMB2; KCNMBL; BKBETA3; SLOBETA3; |
| <b>Gene ID</b>         | <b>27094</b>  |
| <b>mRNA Refseq</b>     | <b>NM_001163677</b>   |
| <b>Protein Refseq</b>  | <b>NP_001157149</b>   |
| <b>MIM</b>             | <b>605222</b>   |
| <b>UniProt ID</b>      | <b>Q9NPA1</b>   |

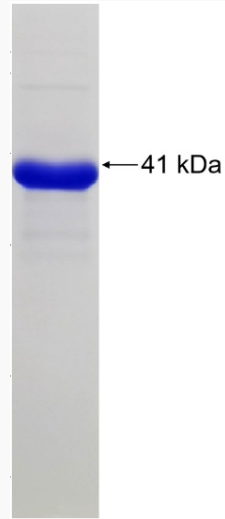
 Tel: 1-631-559-9269 1-516-512-3133

 Email: [info@creative-biomart.com](mailto:info@creative-biomart.com)  Fax: 1-631-938-8127

 45-1 Ramsey Road, Shirley, NY 11967, USA



SDS-PAGE



Tel: 1-631-559-9269 1-516-512-3133

Email: [info@creative-biomart.com](mailto:info@creative-biomart.com) Fax: 1-631-938-8127

45-1 Ramsey Road, Shirley, NY 11967, USA