

Recombinant Human KCNMB3 Protein, hFc-His-tagged

Cat. No. KCNMB3-33H Lot. No. (See product label)

SPECIFICATION

Product Overview	Recombinant Human KCNMB3 Protein(Q9NPA1)(Glu91-Ile200), fused with C-terminal hFc tag and His tag, was expressed in HEK293.
Species	Human
Source	HEK293
ProteinLength	Glu91-Ile200
Form	Phosphate buffered saline
Storage	Store at -20 to -80°C.
Molecular Mass	42 kDa
AA Sequence	EESTCTAIHTDIMDDWLDCAFTCGVHCHGQGKYPCLQVFNLSHPGQKALLHYNEE AVQINPKCFYTPKCHQDRNDLLNSALDIKEFFDHKNGTPFSCFYSPASQSEDVI

GENE INFORMATION

Official Symbol	KCNMB3
Synonyms	KCNMB3; potassium large conductance calcium-activated channel, subfamily M beta member 3; KCNMB2, KCNMBL; calcium-activated potassium channel subunit beta-3; slo-beta-3; K(VCA)beta-3; BK channel subunit beta-3; maxi K channel subunit beta-3;

 Tel: 1-631-559-9269 1-516-512-3133

 Email: info@creative-biomart.com  Fax: 1-631-938-8127

 45-1 Ramsey Road, Shirley, NY 11967, USA

charybdotoxin receptor subunit beta-3; calcium-activated potassium channel, subfamily M subunit beta-3; large conductance, voltage and Ca²⁺ activated potassium channel Maxi K beta 3 subunit; HBETA3; KCNMB2; KCNMBL; BKBETA3; SLOBETA3;

Gene ID 27094

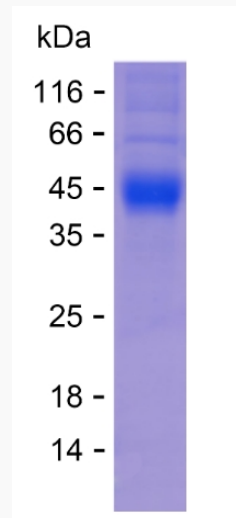
mRNA Refseq NM_001163677

Protein Refseq NP_001157149

MIM 605222

UniProt ID Q9NPA1

SDS-PAGE



 Tel: 1-631-559-9269 1-516-512-3133

 Email: info@creative-biomart.com  Fax: 1-631-938-8127

 45-1 Ramsey Road, Shirley, NY 11967, USA