

Recombinant Human KCNQ3 protein, His-tagged

Cat. No. KCNQ3-280H Lot. No. (See product label)

SPECIFICATION

Product Overview	Recombinant Human KCNQ3 protein(379-517 aa), fused with N-terminal His tag, was expressed in E.coli.
Species	Human
Source	E.coli
ProteinLength	379-517 aa
Form	The purified protein was lyophilized from sterile phosphate-buffered saline (PBS: 58 mM Na ₂ HPO ₄ , 17 mM NaH ₂ PO ₄ , 68 mM NaCl, pH 7.4). Prior to lyophilization, 5% (w/v) trehalose and 5% (w/v) mannitol were incorporated as cryoprotective excipients. The protein was eluted with a buffer containing 300 mM imidazole.
AASequence	PNRIDLVATWRFYESVVSFPFFRKEQLEAASSQKLGLLDRVRLSNPRGSNTKGKLF PLNVDAIEESPSKEPKPVGLNNKERFRTAFRMKAYAFWQSSEDAGTGDPMAEDRG YGNDFPIEDMIPTLKAAIRAVRILQFR
Purity	85%, by SDS-PAGE with Coomassie Brilliant Blue staining.
Storage	Store at 2-8°C for 1-2 weeks. Aliquot and store at -20°C to -80°C for up to 3 months, reconstitution with sterile water and addition of an equal volume of glycerol. Avoid repeat freeze-thaw cycles.
Reconstitution	Dissolve the product in 200 µl sterile water to achieve a working concentration of 0.25

 Tel: 1-631-559-9269 1-516-512-3133

 Email: info@creative-biomart.com  Fax: 1-631-938-8127

 45-1 Ramsey Road, Shirley, NY 11967, USA

g/μl. If experimental compatibility allows, mix the aqueous solution with an equal volume of glycerol (1:1 ratio) after initial reconstitution.

GENE INFORMATION

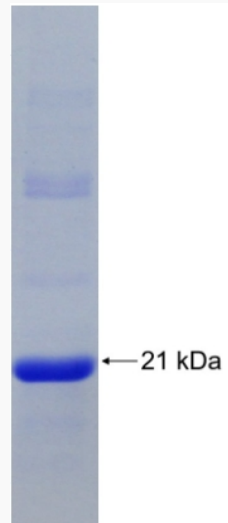
Gene Name	KCNQ3 potassium voltage-gated channel, KQT-like subfamily, member 3 [Homo sapiens]
Official Symbol	KCNQ3
Synonyms	KCNQ3; potassium voltage-gated channel, KQT-like subfamily, member 3; EBN2; potassium voltage-gated channel subfamily KQT member 3; Kv7.3; potassium channel subunit alpha KvLQT3; voltage-gated potassium channel subunit Kv7.3; potassium channel, voltage-gated, subfamily Q, member 3; BFNC2; KV7.3; FLJ37386; FLJ38392; DKFZp686C0248;
Gene ID	3786
mRNA Refseq	NM_001204824
Protein Refseq	NP_001191753
MIM	602232
UniProt ID	O43525

 Tel: 1-631-559-9269 1-516-512-3133

 Email: info@creative-biomart.com  Fax: 1-631-938-8127

 45-1 Ramsey Road, Shirley, NY 11967, USA

SDS-PAGE



 Tel: 1-631-559-9269 1-516-512-3133

 Email: info@creative-biomart.com  Fax: 1-631-938-8127

 45-1 Ramsey Road, Shirley, NY 11967, USA