

Recombinant Full Length Human KCNRG Protein, C-Flag-tagged

Cat. No. KCNRG-1449HFL **Lot. No.** (See product label)

SPECIFICATION

Product Overview	Recombinant Full Length Human KCNRG Protein, fused to Flag-tag at C-terminus, was expressed in Mammalian cells.
Species	Human
Source	Mammalian Cells
Description	This gene encodes a protein which regulates the activity of voltage-gated potassium channels. This gene is on chromosome 13 and overlaps the gene for tripartite motif containing 13 on the same strand. Multiple transcript variants encoding different isoforms have been found for this gene.
Form	25 mM Tris HCl, pH 7.3, 100 mM glycine, 10% glycerol.
Molecular Mass	30.9 kDa
AA Sequence	MSSQELVTLNVGGKIFTRFSTIKQFPASRLARMLDGRDQEFKMGVGGQIFVDRDGD LFSFILDFLRTHQL LLPTEFSDYLRQLREALFYELRSLVDLLNPYLLQPRPALVEVHFLS RNTQAFFRVFGSCSKTIEMLTGRI TVFTEQPSAPTWNGNFFPPQMTLLPLPPQRPS YHDLVFQCGSDSTTDNQTGVRYVSIKPDNRKLANGTNV LGLLIDTLLKEGFHLVSTRTVSSEDKTECYSEFERIKSPEVLITNETPKPETIIPEQSQIK KTRTRPLEQKLISEEDLAANDILDYKDDDDKV
Purity	> 80% as determined by SDS-PAGE and Coomassie blue staining.

 Tel: 1-631-559-9269 1-516-512-3133

 Email: info@creative-biomart.com  Fax: 1-631-938-8127

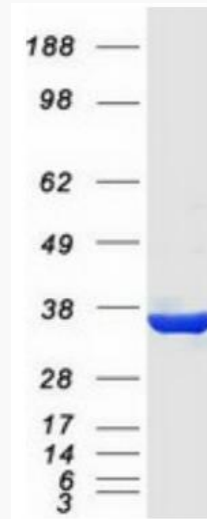
 45-1 Ramsey Road, Shirley, NY 11967, USA

Stability	Stable for 12 months from the date of receipt of the product under proper storage and handling conditions. Avoid repeated freeze-thaw cycles.
Storage	Store at -80 centigrade.
Concentration	>50 ug/mL as determined by microplate BCA method.
Preparation	Recombinant protein was captured through anti-DDK affinity column followed by conventional chromatography steps.
Full Length	Full L.
GENE INFORMATION	
Gene Name	KCNRG potassium channel regulator [Homo sapiens (human)]
Official Symbol	KCNRG
Synonyms	DLTET
Gene ID	283518
mRNA Refseq	NM_173605.2
Protein Refseq	NP_775876.1
MIM	607947
UniProt ID	Q8N5I3

 Tel: 1-631-559-9269 1-516-512-3133

 Email: info@creative-biomart.com  Fax: 1-631-938-8127

 45-1 Ramsey Road, Shirley, NY 11967, USA



Coomassie blue staining of purified KCNRG protein.

 Tel: 1-631-559-9269 1-516-512-3133

 Email: info@creative-biomart.com  Fax: 1-631-938-8127

 45-1 Ramsey Road, Shirley, NY 11967, USA