

Recombinant Human KCNRG Protein, Myc/DDK-tagged, C13 and N15-labeled

Cat. No. KCNRG-1664H **Lot. No.** (See product label)

SPECIFICATION

Product Overview	KCNRG MS Standard C13 and N15-labeled recombinant protein (NP_775876) with a C-terminal MYC/DDK tag, was expressed in HEK293 cells.
Species	Human
Source	HEK293
Description	This gene encodes a protein which regulates the activity of voltage-gated potassium channels. This gene is on chromosome 13 and overlaps the gene for tripartite motif containing 13 on the same strand. Multiple transcript variants encoding different isoforms have been found for this gene.
Molecular Mass	31 kDa
AA Sequence	MSSQELVTLNVGGKIFTTRFSTIKQFPASRLARMLDGRDQEFKMGVGGQIFVDRDGDL FSFILDFLRTHQLLLPTEFSDYLRLQREALFYELRSLVDLLNPYLLQPRPALVEVHFLS RNTQAFFRVFGSCSKTIEMLTGRITVFTEQPSAPTWNGNFFPPQMTLLPLPPQRPSY HDLVFQCGSDSTTDNQTGVRYVSIKPDNRKLANGTNVLGLLIDTLLKEGFHLVSTRT VSSDKTECYSFERIKSPEVLITNETPKPETIIPEQSQIKKTRTRPLEQKLISEEDLAAN DILDYKDDDDKV
Purity	> 80% as determined by SDS-PAGE and Coomassie blue staining
Stability	Stable for 3 months from receipt of products under proper storage and handling

 Tel: 1-631-559-9269 1-516-512-3133

 Email: info@creative-biomart.com  Fax: 1-631-938-8127

 45-1 Ramsey Road, Shirley, NY 11967, USA

conditions.

Storage Store at -80 centigrade. Avoid repeated freeze-thaw cycles.

Concentration 50 µg/mL as determined by BCA

Storage Buffer 100 mM glycine, 25 mM Tris-HCl, pH 7.3.

GENE INFORMATION

Gene Name KCNRG potassium channel regulator [Homo sapiens (human)]

Official Symbol KCNRG

Synonyms KCNRG; potassium channel regulator; potassium channel regulatory protein; putative potassium channel regulatory protein; DLTET;

Gene ID 283518

mRNA Refseq NM_173605

Protein Refseq NP_775876

MIM 607947

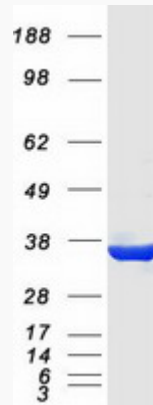
UniProt ID Q8N5I3

 Tel: 1-631-559-9269 1-516-512-3133

 Email: info@creative-biomart.com  Fax: 1-631-938-8127

 45-1 Ramsey Road, Shirley, NY 11967, USA

SDS-PAGE



 Tel: 1-631-559-9269 1-516-512-3133

 Email: info@creative-biomart.com  Fax: 1-631-938-8127

 45-1 Ramsey Road, Shirley, NY 11967, USA