

Recombinant Human KCNT1 protein, His-tagged

Cat. No. KCNT1-17H Lot. No. (See product label)

SPECIFICATION

Product Overview	Recombinant Human KCNT1 protein(Q5JUK3)(401-820 aa), fused with C-terminal His tag, was expressed in E.coli.
Species	Human
Source	E.coli
ProteinLength	401-820 aa
Form	Phosphate buffered saline
Molecular Mass	49 kDa
AASequence	LQIPLWSQRVIYLQGSALKDQDLMRKMDNGEACFILSSRNEVDRTAADHQILRAW AVKDFAPNCPLYVQILKPENKFHVVFADHVVCEEECKYAMLALNCICPATSTLITLLV HTSRGQEGQESPEQWQRMYGRCSGNEVYHIRMGDSKFFREYEGKSFTYAAFHAH KKYGVCLIGLKREDNKSILLNPGPRHILAASDTCFYINITKEENSAFIFKQEEKRKKRAF SGQGLHEGPARLPVHSIIASMGTVAMDLQGTEHRPTQSGGGGGGSKLALPTENG GSRRPSIAPVLELADSSALLPCDLLSDQSEDEVTPSDDEGLSVVEYVKGYPNSPYI GSSPTLCHLLPVKAPFCCLRLDKGCKHNSYEDAKAYGFKNKLIIVSAETAGNGLYNFI VPLRAYYRSRKELNPVLLLD
Storage	Store at -20°C/-80°C.
Reconstitution	It is recommended that sterile water be added to the vial to prepare a stock solution of

 Tel: 1-631-559-9269 1-516-512-3133

 Email: info@creative-biomart.com  Fax: 1-631-938-8127

 45-1 Ramsey Road, Shirley, NY 11967, USA

0.2 ug/ul. Centrifuge the vial at 4°C before opening to recover the entire contents.

GENE INFORMATION

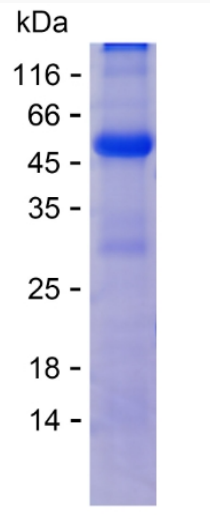
Gene Name	KCNT1 potassium channel, subfamily T, member 1 [Homo sapiens]
Official Symbol	KCNT1
Synonyms	KCNT1; potassium channel, subfamily T, member 1; potassium channel subfamily T member 1; KCa4.1; KIAA1422; SLACK; bA100C15.2; FLJ41282;
Gene ID	57582
mRNA Refseq	NM_020822
Protein Refseq	NP_065873
MIM	608167
UniProt ID	Q5JUK3

 Tel: 1-631-559-9269 1-516-512-3133

 Email: info@creative-biomart.com  Fax: 1-631-938-8127

 45-1 Ramsey Road, Shirley, NY 11967, USA

SDS-PAGE



 Tel: 1-631-559-9269 1-516-512-3133

 Email: info@creative-biomart.com  Fax: 1-631-938-8127

 45-1 Ramsey Road, Shirley, NY 11967, USA