

Recombinant Human KCTD11 Protein, Myc/DDK-tagged, C13 and N15-labeled

Cat. No. KCTD11-1560H **Lot. No.** (See product label)

SPECIFICATION

Product Overview	KCTD11 MS Standard C13 and N15-labeled recombinant protein (NP_001002914) with a C-terminal MYC/DDK tag, was expressed in HEK293 cells.
Species	Human
Source	HEK293
Description	KCTD11 (Potassium Channel Tetramerization Domain Containing 11) is a Protein Coding gene. Diseases associated with KCTD11 include Medulloblastoma and Progressive Myoclonus Epilepsy 3. Among its related pathways are Sweet Taste Signaling and Hepatic ABC Transporters. An important paralog of this gene is KCTD21.
Molecular Mass	25.9 kDa
AA Sequence	MLGAMFRAGTPMPPNLSQGGGHYFIDRDGKAFRHILNFLRLGRLDLPRGYGETAL LRAEADFYQIRPLLDALRELEASQGTPAPTAALLHADVDVSPRLVHFSARRGPHHYE LSSVQVDTFRANLFC TDSECLGALRARFGVASGDRAEGSPHFHLEWAPRPVELPEV EYGRGLGLQPLWTGGPGERREVVGTSPFLEEVL RVALEHGFRLDSVFPDPEDLLNSR SLRFVHRHTRTRPLEQKLISEEDLAANDILDYKDDDDKV
Purity	> 80% as determined by SDS-PAGE and Coomassie blue staining
Stability	Stable for 3 months from receipt of products under proper storage and handling

 Tel: 1-631-559-9269 1-516-512-3133

 Email: info@creative-biomart.com  Fax: 1-631-938-8127

 45-1 Ramsey Road, Shirley, NY 11967, USA

conditions.

Storage Store at -80 centigrade. Avoid repeated freeze-thaw cycles.

Concentration 50 µg/mL as determined by BCA

Storage Buffer 100 mM glycine, 25 mM Tris-HCl, pH 7.3.

GENE INFORMATION

Gene Name [KCTD11 potassium channel tetramerisation domain containing 11 \[Homo sapiens \(human\) \]](#)

Official Symbol [KCTD11](#)

Synonyms KCTD11; potassium channel tetramerisation domain containing 11; C17orf36, chromosome 17 open reading frame 36; BTB/POZ domain-containing protein KCTD11; KCASH1; REN; retinoic acid, EGF, NGF induced gene protein; potassium channel tetramerization domain containing 11; retinoic acid, EGF, NGF induced gene/potassium channel tetramerization domain containing 11; C17orf36; REN/KCTD11; MGC129844;

Gene ID [147040](#)

mRNA Refseq [NM_001002914](#)

Protein Refseq [NP_001002914](#)

MIM [609848](#)

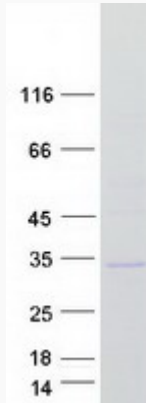
UniProt ID [Q693B1](#)

 Tel: 1-631-559-9269 1-516-512-3133

 Email: info@creative-biomart.com  Fax: 1-631-938-8127

 45-1 Ramsey Road, Shirley, NY 11967, USA

SDS-PAGE



 Tel: 1-631-559-9269 1-516-512-3133

 Email: info@creative-biomart.com  Fax: 1-631-938-8127

 45-1 Ramsey Road, Shirley, NY 11967, USA