

Recombinant Human KCTD15 Protein, Myc/DDK-tagged, C13 and N15-labeled

Cat. No. KCTD15-1804H **Lot. No.** (See product label)

SPECIFICATION

Product Overview KCTD15 MS Standard C13 and N15-labeled recombinant protein (NP_001123466) with a C-terminal MYC/DDK tag, was expressed in HEK293 cells.

Species Human

Source HEK293

Description During embryonic development, interferes with neural crest formation. Inhibits AP2 transcriptional activity by interaction with its activation domain.

Molecular Mass 31.8 kDa

AA Sequence

```
MPHRKERPSGSSLHTHGSTGTAEGGNMSRSLTRSPVSPLAAQGIPLPAQLTKSNA
PVHIDVGGHMYTSSLATLTKYPDSRISRLFNGTEPIVLDLQHYFIDRDGEIFRYVLS
FLRTSKLLLPDDFKDFSLLYEEARYYQLQPMVRELERWQQEQEQRRRSRACDCLVV
RVTPDLGERIALSGEKALIEEVFPETGDVMCNSVNAGWNQDPHTVIRFPLNGYCRLN
SVQVLERLFQRGFSVAASCGGGVDSSQFSEYVLCREERRPQPTPTAVRIKQEPLDT
RTRPLEQKLISEEDLAANDILDYKDDDDKV
```

Purity > 80% as determined by SDS-PAGE and Coomassie blue staining

Stability Stable for 3 months from receipt of products under proper storage and handling conditions.

 Tel: 1-631-559-9269 1-516-512-3133

 Email: info@creative-biomart.com  Fax: 1-631-938-8127

 45-1 Ramsey Road, Shirley, NY 11967, USA

Storage	Store at -80 centigrade. Avoid repeated freeze-thaw cycles.
----------------	---

Concentration	50 µg/mL as determined by BCA
----------------------	-------------------------------

Storage Buffer	100 mM glycine, 25 mM Tris-HCl, pH 7.3.
-----------------------	---

GENE INFORMATION

Gene Name	KCTD15 potassium channel tetramerisation domain containing 15 [Homo sapiens (human)]
------------------	--

Official Symbol	KCTD15
------------------------	--------

Synonyms	KCTD15; potassium channel tetramerisation domain containing 15; BTB/POZ domain-containing protein KCTD15; MGC25497; MGC2628;
-----------------	--

Gene ID	79047
----------------	-------

mRNA Refseq	NM_001129994
--------------------	--------------

Protein Refseq	NP_001123466
-----------------------	--------------

MIM	615240
------------	--------

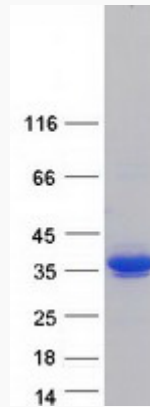
UniProt ID	Q96SI1
-------------------	--------

 Tel: 1-631-559-9269 1-516-512-3133

 Email: info@creative-biomart.com  Fax: 1-631-938-8127

 45-1 Ramsey Road, Shirley, NY 11967, USA

SDS-PAGE



 Tel: 1-631-559-9269 1-516-512-3133

 Email: info@creative-biomart.com  Fax: 1-631-938-8127

 45-1 Ramsey Road, Shirley, NY 11967, USA