

Recombinant Human KCTD15 Protein, Myc/DDK-tagged, C13 and N15-labeled

Cat. No. KCTD15-919H **Lot. No.** (See product label)

SPECIFICATION

Product Overview	KCTD15 MS Standard C13 and N15-labeled recombinant protein (NP_076981) with a C-terminal MYC/DDK tag, was expressed in HEK293 cells.
Species	Human
Source	HEK293
Description	KCTD15 (Potassium Channel Tetramerization Domain Containing 15) is a Protein Coding gene. Diseases associated with KCTD15 include Leptin Deficiency Or Dysfunction. Among its related pathways are Sweet Taste Signaling and Hepatic ABC Transporters. An important paralog of this gene is KCTD1.
Molecular Mass	26.5 kDa
AA Sequence	MPHRKERPSGSSLHTHGSTGTAEGGNMSRSLTRSPVSPLAAQGIPLPAQLTKSNA PVHIDVGSHPMYTSSLATLTKYPDSRISRLFNGTEPIVLDSLKQHYFIDRDGEIFRYVLS FLRTSKLLLPDDFKDFSLLYEEARYYQLQPMVRELERWQQEQEQRRRSRACDCLVV RVTPDLGERIALSGEKALIEEVFPETGDMCNSVNAGWNQDPHTHVIRFPLNGYCRLN SVQDVLTRTRPLEQKLISEEDLAANDILDYKDDDDKV
Purity	> 80% as determined by SDS-PAGE and Coomassie blue staining
Stability	Stable for 3 months from receipt of products under proper storage and handling conditions.

 Tel: 1-631-559-9269 1-516-512-3133

 Email: info@creative-biomart.com  Fax: 1-631-938-8127

 45-1 Ramsey Road, Shirley, NY 11967, USA

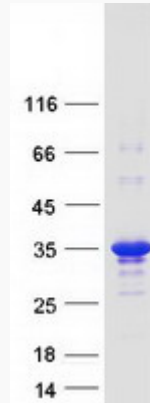
Storage	Store at -80 centigrade. Avoid repeated freeze-thaw cycles.
Concentration	50 µg/mL as determined by BCA
Storage Buffer	100 mM glycine, 25 mM Tris-HCl, pH 7.3.
GENE INFORMATION	
Gene Name	KCTD15 potassium channel tetramerisation domain containing 15 [Homo sapiens (human)]
Official Symbol	KCTD15
Synonyms	KCTD15; potassium channel tetramerisation domain containing 15; BTB/POZ domain-containing protein KCTD15; MGC25497; MGC2628;
Gene ID	79047
mRNA Refseq	NM_024076
Protein Refseq	NP_076981
MIM	615240
UniProt ID	Q96SI1

 Tel: 1-631-559-9269 1-516-512-3133

 Email: info@creative-biomart.com  Fax: 1-631-938-8127

 45-1 Ramsey Road, Shirley, NY 11967, USA

SDS-PAGE



 Tel: 1-631-559-9269 1-516-512-3133

 Email: info@creative-biomart.com  Fax: 1-631-938-8127

 45-1 Ramsey Road, Shirley, NY 11967, USA