

Recombinant Human KCTD17 Protein, Myc/DDK-tagged, C13 and N15-labeled

Cat. No. KCTD17-3142H Lot. No. (See product label)

SPECIFICATION

Product Overview	KCTD17 MS Standard C13 and N15-labeled recombinant protein (NP_078957) with a C-terminal MYC/DDK tag, was expressed in HEK293 cells.
Species	Human
Source	HEK293
Description	This gene encodes a protein that belongs to a conserved family of potassium channel tetramerization domain (KCTD)-containing proteins. The encoded protein functions in ciliogenesis by acting as a substrate adaptor for the cullin3-based ubiquitin-conjugating enzyme E3 ligase, and targets trichoplein, a keratin-binding protein, for degradation via polyubiquitylation. A mutation in this gene is associated with autosomal dominant myoclonic dystonia 26.
Molecular Mass	32.5 kDa
AA Sequence	MRMEAGEAAPPAGAGGRAAGGWGKVVRLNVGGTVFLTTRQTLCREQKSFLSRLC QGEELQSDRDETGAYLIDRPTYFGPILNFLRHGKLVLDKDMAEEGVLEEAFFYNI PLIRIIKDRMEEKDYTVTQVPPKHVYRVLQCQEEELTQMVSTMSDGWRFEQLVNIGS SYNYGSEDQAEFLCVSKELHSTPNGLSSESSRRTKSTEEQLLEEQQQQEEVEVEVE VEQVQVEADAQEKGSRPHPLRPEAELAVRASPRPLARPQSCHPCCYKPEAPGCEA PDHLQGLGVPITRTRPLEQKLISEEDLAANDILDYKDDDDKV
Purity	> 80% as determined by SDS-PAGE and Coomassie blue staining

 Tel: 1-631-559-9269 1-516-512-3133

 Email: info@creative-biomart.com  Fax: 1-631-938-8127

 45-1 Ramsey Road, Shirley, NY 11967, USA

Stability	Stable for 3 months from receipt of products under proper storage and handling conditions.
Storage	Store at -80 centigrade. Avoid repeated freeze-thaw cycles.
Concentration	50 µg/mL as determined by BCA
Storage Buffer	100 mM glycine, 25 mM Tris-HCl, pH 7.3.

GENE INFORMATION

Gene Name	KCTD17 potassium channel tetramerisation domain containing 17 [Homo sapiens (human)]
Official Symbol	KCTD17
Synonyms	KCTD17; potassium channel tetramerisation domain containing 17; BTB/POZ domain-containing protein KCTD17; FLJ12242; FLJ98761;
Gene ID	79734
mRNA Refseq	NM_024681
Protein Refseq	NP_078957
MIM	616386
UniProt ID	Q8N5Z5

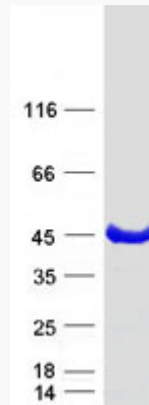
 Tel: 1-631-559-9269 1-516-512-3133

 Email: info@creative-biomart.com  Fax: 1-631-938-8127

 45-1 Ramsey Road, Shirley, NY 11967, USA



SDS-PAGE



Tel: 1-631-559-9269 1-516-512-3133

Email: info@creative-biomart.com Fax: 1-631-938-8127

45-1 Ramsey Road, Shirley, NY 11967, USA