

Recombinant Human KCTD2 Protein, Myc/DDK-tagged, C13 and N15-labeled

Cat. No. KCTD2-2457H **Lot. No.** (See product label)

SPECIFICATION

Product Overview	KCTD2 MS Standard C13 and N15-labeled recombinant protein (NP_056168) with a C-terminal MYC/DDK tag, was expressed in HEK293 cells.
Species	Human
Source	HEK293
Description	KCTD2 (Potassium Channel Tetramerization Domain Containing 2) is a Protein Coding gene. Diseases associated with KCTD2 include Dystonia 11, Myoclonic. Among its related pathways are Sweet Taste Signaling and Hepatic ABC Transporters. An important paralog of this gene is KCTD5.
Molecular Mass	28.3 kDa
AA Sequence	MAELQLDPAMAGLGGGGGSGVGDGGGPVRGPPSPRPAGPTPRGHGRPAAVAQ PLEPGPGPPERAGGGGAARWVRLNVGGTYFVTTTRQTLGREPKSFLCRLCCQEDPE LDSDKDETGAYLIDRDPTYFGPILNYLRHGKLIITKELAEEGVLEEAFFYNIASLVRLVK ERIRDNENRTSQGPVKHVYRVLQCQEEELTQMVSTMSDGWKFEQLISIGSSYNYGN EDQAEFLCVVSRELNNSTNGIVIEPSEKAKILQERGSRMTRTRPLEQKLISEEDLAAN DILDYKDDDDKV
Purity	> 80% as determined by SDS-PAGE and Coomassie blue staining
Stability	Stable for 3 months from receipt of products under proper storage and handling

 Tel: 1-631-559-9269 1-516-512-3133

 Email: info@creative-biomart.com  Fax: 1-631-938-8127

 45-1 Ramsey Road, Shirley, NY 11967, USA

conditions.

Storage Store at -80 centigrade. Avoid repeated freeze-thaw cycles.

Concentration 50 µg/mL as determined by BCA

Storage Buffer 100 mM glycine, 25 mM Tris-HCl, pH 7.3.

GENE INFORMATION

Gene Name KCTD2 potassium channel tetramerization domain containing 2 [Homo sapiens (human)]

Official Symbol KCTD2

Synonyms KCTD2; potassium channel tetramerization domain containing 2; BTB/POZ domain-containing protein KCTD2; potassium channel tetramerisation domain containing 2; potassium channel tetramerization domain-containing protein 2

Gene ID 23510

mRNA Refseq NM_015353

Protein Refseq NP_056168

MIM 613422

UniProt ID Q14681

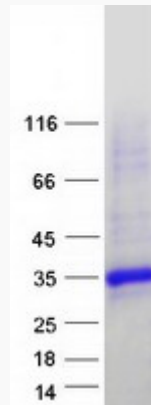
 Tel: 1-631-559-9269 1-516-512-3133

 Email: info@creative-biomart.com  Fax: 1-631-938-8127

 45-1 Ramsey Road, Shirley, NY 11967, USA



SDS-PAGE



Tel: 1-631-559-9269 1-516-512-3133

Email: info@creative-biomart.com Fax: 1-631-938-8127

45-1 Ramsey Road, Shirley, NY 11967, USA