

# Recombinant Human KCTD3 Protein, Myc/DDK-tagged, C13 and N15-labeled

Cat. No. KCTD3-3575H Lot. No. (See product label)

## SPECIFICATION

### Product Overview

KCTD3 MS Standard C13 and N15-labeled recombinant protein (NP\_057205) with a C-terminal MYC/DDK tag, was expressed in HEK293 cells.

### Species

Human

### Source

HEK293

### Description

This gene encodes a member of the potassium channel tetramerization-domain containing (KCTD) protein family. Members of this protein family regulate the biophysical characteristics of ion channels. In mouse, this protein interacts with hyperpolarization-activated cyclic nucleotide-gated channel complex 3 and enhances its cell surface expression and current density. Alternative splicing results in multiple transcript variants.

### Molecular Mass

88.8 kDa

### AA Sequence

MAGGHCGSVPAAGSGEIVQLNVGGTRFSTSRQTLMWIPDSFFSSLLSGRISTLR  
 DETGAIFIDRPAAAFAPILNFLRTKELDLRGVSINVLRHEAEFYGITPLVRRLLLCEELE  
 RSSCGSVLFHGYLPPPGIPSRKINNTVRSADSRNGLNSTEGEARGNGTQPVLSGTG  
 EETVRLGFPVDPRKVLIVAGHHNWIVAAYAHFAVCYRIKESSGWQQVFTSPYLDWTI  
 ERVALNAKVVGGPHGDKDKMVAVASESSIILWSVQDGGSGSEIGVFSLGVPVDALF  
 FIGNQLVATSHTGKVGWVNAVQTQHWQVQDVVPITSYDTAGSFLLLGCNNGSIYYIDM  
 QKFPLRMKDNDLLVTELYHDPSNDAITALSVYLTPKTSVSGNWIEIAYGTSSGAVRVI

 Tel: 1-631-559-9269 1-516-512-3133

 Email: [info@creative-biomart.com](mailto:info@creative-biomart.com)  Fax: 1-631-938-8127

 45-1 Ramsey Road, Shirley, NY 11967, USA

VQHPETVGSQPQLFQTFTVHRSPVTKIMLSEKHLVSVCADNNHVRTWTVTRFRGMI  
 STQPGSTPLASFKILSLEETESHGSSYSSGNDIGPFGERDDQQVFIQKVVPITNKLFRV  
 LSSTGKRICEIQAVDCTTISSTVRECEGSSRMGSRPRRYLFTGHTNGSIQMWDLTT  
 AMDMVNKSEDKDVGGPTEEELLKLLDQCCLDSTSRCATPNISPATSVVQHSHLRESN  
 SSLQLQHDDTTHEAATYGSMRPYRESPLLARARRTESFHSYRDFQTINLNRNVERA  
 VPENGNLGPQAEVKGATGECNISERKSPGVEIKSLRELDGSLVHVKIAEGFSESKKR  
 SSEDENENKIEFRKKGGFEGGGFLGRKKVPYLASSPSTSDGGTDSPGTASPSPTKT  
 TSPRHKKSDSSGQEYSLTRTRPLEQKLISEEDLAANDILDYKDDDDKV

**Purity** > 80% as determined by SDS-PAGE and Coomassie blue staining

**Stability** Stable for 3 months from receipt of products under proper storage and handling conditions.

**Storage** Store at -80 centigrade. Avoid repeated freeze-thaw cycles.

**Concentration** 50 µg/mL as determined by BCA

**Storage Buffer** 100 mM glycine, 25 mM Tris-HCl, pH 7.3.

## GENE INFORMATION

**Gene Name** [KCTD3 potassium channel tetramerisation domain containing 3 \[ Homo sapiens \(human\) \]](#)

**Official Symbol** [KCTD3](#)

**Synonyms** KCTD3; potassium channel tetramerisation domain containing 3; BTB/POZ domain-containing protein KCTD3; NY REN 45; NY-REN-45 antigen; renal carcinoma antigen NY-REN-45; NY-REN-45; MGC43935;

 Tel: 1-631-559-9269 1-516-512-3133

 Email: [info@creative-biomart.com](mailto:info@creative-biomart.com)  Fax: 1-631-938-8127

 45-1 Ramsey Road, Shirley, NY 11967, USA

**Gene ID** 51133

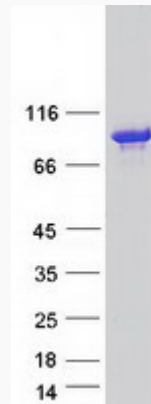
**mRNA Refseq** NM\_016121

**Protein Refseq** NP\_057205

**MIM** 613272

**UniProt ID** Q9Y597

**SDS-PAGE**



 Tel: 1-631-559-9269 1-516-512-3133

 Email: [info@creative-biomart.com](mailto:info@creative-biomart.com)  Fax: 1-631-938-8127

 45-1 Ramsey Road, Shirley, NY 11967, USA