

Recombinant Human KCTD6 protein, GST-tagged

Cat. No. KCTD6-1234H Lot. No. (See product label)

SPECIFICATION

Product Overview	Recombinant Human KCTD6 protein(98-237 aa), fused with N-terminal GST tag, was expressed in E. coli.
Species	Human
Source	E. coli
ProteinLength	98-237 aa
Form	The purified protein was lyophilized from sterile phosphate-buffered saline (PBS: 58 mM Na ₂ HPO ₄ , 17 mM NaH ₂ PO ₄ , 68 mM NaCl, pH 8.0). Prior to lyophilization, 5% (w/v) trehalose and 5% (w/v) mannitol were incorporated as cryoprotective excipients. The protein was eluted with a buffer containing 100 mM reduced glutathione (GSH).
AASequence	IEPLIQCLNDPKPLYPMDTFEEVVELSSTRKLSKYSNPVAVIITQLTITTKVHSLLEGISN YFTKWNKHMMDTRDCQVSFTFGPCDYHQEVSLRVHLMYITKQGFTIRNTRVHHM SERANENTVEHNWTFCLARKTDD
Purity	85%, by SDS-PAGE.
Storage	Store at 2-8°C for 1-2 weeks. Aliquot and store at -20°C to -80°C for up to 3 months, reconstitution with sterile water and addition of an equal volume of glycerol. Avoid repeat freeze-thaw cycles.

 Tel: 1-631-559-9269 1-516-512-3133

 Email: info@creative-biomart.com  Fax: 1-631-938-8127

 45-1 Ramsey Road, Shirley, NY 11967, USA

Reconstitution It is recommended that sterile water be added to the vial to prepare a stock solution of 0.25 ug/ul. Centrifuge the vial at 4°C before opening to recover the entire contents.

GENE INFORMATION

Gene Name KCTD6 potassium channel tetramerisation domain containing 6 [Homo sapiens]

Official Symbol KCTD6

Synonyms KCTD6; potassium channel tetramerisation domain containing 6; BTB/POZ domain-containing protein KCTD6; KCASH3; MGC27385;

mRNA Refseq NM_001128214

Protein Refseq NP_001121686

UniProt ID Q8NC69

Gene ID 200845

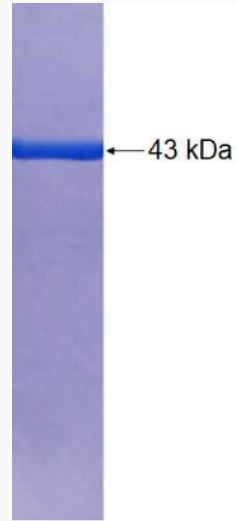
 Tel: 1-631-559-9269 1-516-512-3133

 Email: info@creative-biomart.com  Fax: 1-631-938-8127

 45-1 Ramsey Road, Shirley, NY 11967, USA



SDS-PAGE



Tel: 1-631-559-9269 1-516-512-3133

Email: info@creative-biomart.com Fax: 1-631-938-8127

45-1 Ramsey Road, Shirley, NY 11967, USA