

Recombinant Human KCTD6 Protein, Myc/DDK-tagged, C13 and N15-labeled

Cat. No. KCTD6-5873H **Lot. No.** (See product label)

SPECIFICATION

Product Overview	KCTD6 MS Standard C13 and N15-labeled recombinant protein (NP_001121686) with a C-terminal MYC/DDK tag, was expressed in HEK293 cells.
Species	Human
Source	HEK293
Description	KCTD6 (Potassium Channel Tetramerization Domain Containing 6) is a Protein Coding gene. Diseases associated with KCTD6 include Medulloblastoma. Among its related pathways are Sweet Taste Signaling and Hepatic ABC Transporters. Gene Ontology (GO) annotations related to this gene include ankyrin binding. An important paralog of this gene is KCTD21.
Molecular Mass	27.6 kDa
AA Sequence	MDNGDWGYMMTDPVTLNVGGHLYTTSLTTLTRYPD SMLGAMFGGDFPTARDPQG NYFIDRDGPLFRYVLNFLRTSELTLPLDFKEFDLLRKEADFYQIEPLIQCLNDPKPLYP MDTFEEVVELSSTRKLSKYSNPVAVIITQLTITTKVHSLLEGISNYFTKWNKHMMDTR DCQVSFTFGPCDYHQEVSLRVHLM EYITKQGFTIRNTRVHHMSERANENTVEHNWT FCRLARKTDDSGPTRTRPLEQKLISEEDLAANDILDYKDDDDKV
Purity	> 80% as determined by SDS-PAGE and Coomassie blue staining
Stability	Stable for 3 months from receipt of products under proper storage and handling

 Tel: 1-631-559-9269 1-516-512-3133

 Email: info@creative-biomart.com  Fax: 1-631-938-8127

 45-1 Ramsey Road, Shirley, NY 11967, USA

conditions.

Storage Store at -80 centigrade. Avoid repeated freeze-thaw cycles.

Concentration 50 µg/mL as determined by BCA

Storage Buffer 100 mM glycine, 25 mM Tris-HCl, pH 7.3.

GENE INFORMATION

Gene Name KCTD6 potassium channel tetramerisation domain containing 6 [Homo sapiens (human)]

Official Symbol KCTD6

Synonyms KCTD6; potassium channel tetramerisation domain containing 6; BTB/POZ domain-containing protein KCTD6; KCASH3; MGC27385;

Gene ID 200845

mRNA Refseq NM_001128214

Protein Refseq NP_001121686

MIM 618791

UniProt ID Q8NC69

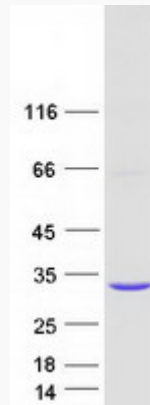
 Tel: 1-631-559-9269 1-516-512-3133

 Email: info@creative-biomart.com  Fax: 1-631-938-8127

 45-1 Ramsey Road, Shirley, NY 11967, USA



SDS-PAGE



Tel: 1-631-559-9269 1-516-512-3133

Email: info@creative-biomart.com Fax: 1-631-938-8127

45-1 Ramsey Road, Shirley, NY 11967, USA