

Recombinant Human KCTD6 Protein, Myc/DDK-tagged, C13 and N15-labeled

Cat. No. KCTD6-870H **Lot. No.** (See product label)

SPECIFICATION

Product Overview	KCTD6 MS Standard C13 and N15-labeled recombinant protein (NP_699162) with a C-terminal MYC/DDK tag, was expressed in HEK293 cells.
Species	Human
Source	HEK293
Description	Probable substrate-specific adapter of a BCR (BTB-CUL3-RBX1) E3 ubiquitin-protein ligase complex mediating the ubiquitination and subsequent proteasomal degradation of target proteins. Promotes the ubiquitination of HDAC1; the function seems to depend on KCTD11:KCTD6 oligomerization. Can function as antagonist of the Hedgehog pathway by affecting the nuclear transfer of transcription factor GLI1; the function probably occurs via HDAC1 down-regulation, keeping GLI1 acetylated and inactive. Inhibits cell growth and tumorigenicity of medulloblastoma (MDB). Involved in regulating protein levels of ANK1 isoform Mu17 probably implicating CUL3-dependent proteasomal degradation.
Molecular Mass	27.6 kDa
AA Sequence	MDNGDWGYMMTPVTLNVGGHLYTTSLTTLTRYPD SMLGAMFGGDFPTARDPQG NYFIDRDGPLFRYVLNFLRTSELTLPLDFKEFDLLRKEADFYQIEPLIQCLNDPKPLYP MDTFEEVVELSSTRKLSKYSNPVAVIITQLTITTKVHSLLEGISNYFTKWNKHMMDTR DCQVSFTFGPCDYHQEVSLRVHLM EYITKQGFTIRNTRVHHMSERANENTVEHNWT

 Tel: 1-631-559-9269 1-516-512-3133

 Email: info@creative-biomart.com  Fax: 1-631-938-8127

 45-1 Ramsey Road, Shirley, NY 11967, USA

FCRLARKTDDSGPTRTRPLEQKLISEEDLAANDILDYKDDDDKV

Purity > 80% as determined by SDS-PAGE and Coomassie blue staining

Stability Stable for 3 months from receipt of products under proper storage and handling conditions.

Storage Store at -80 centigrade. Avoid repeated freeze-thaw cycles.

Concentration 50 µg/mL as determined by BCA

Storage Buffer 100 mM glycine, 25 mM Tris-HCl, pH 7.3.

GENE INFORMATION

Gene Name [KCTD6 potassium channel tetramerisation domain containing 6 \[Homo sapiens \(human\) \]](#)

Official Symbol [KCTD6](#)

Synonyms KCTD6; potassium channel tetramerisation domain containing 6; BTB/POZ domain-containing protein KCTD6; KCASH3; MGC27385;

Gene ID [200845](#)

mRNA Refseq [NM_153331](#)

Protein Refseq [NP_699162](#)

MIM [618791](#)

 Tel: 1-631-559-9269 1-516-512-3133

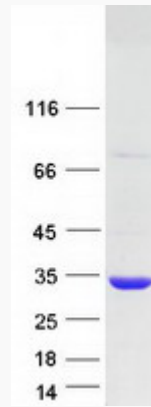
 Email: info@creative-biomart.com  Fax: 1-631-938-8127

 45-1 Ramsey Road, Shirley, NY 11967, USA

UniProt ID

Q8NC69

SDS-PAGE



 Tel: 1-631-559-9269 1-516-512-3133

 Email: info@creative-biomart.com  Fax: 1-631-938-8127

 45-1 Ramsey Road, Shirley, NY 11967, USA