

Recombinant Human KCTD8 Protein, Myc/DDK-tagged, C13 and N15-labeled

Cat. No. KCTD8-1140H Lot. No. (See product label)

SPECIFICATION

Product Overview

KCTD8 MS Standard C13 and N15-labeled recombinant protein (NP_938167) with a C-terminal MYC/DDK tag, was expressed in HEK293 cells.

Species

Human

Source

HEK293

Description

KCTD8 (Potassium Channel Tetramerization Domain Containing 8) is a Protein Coding gene. Diseases associated with KCTD8 include Progressive Myoclonus Epilepsy 3. Among its related pathways are Sweet Taste Signaling and Hepatic ABC Transporters. An important paralog of this gene is KCTD16.

Molecular Mass

52.3 kDa

AA Sequence

```
MALKDTGSGGSTILPISEMVSSSSSPGASAAAAPGPCAPSPFPEVVELNVGGQVYV
TKHSTLLSVPDSTLASMFSPPRRGGARRRGELPRDSRARFFIDRDGFLFRYVLDYL
RDKQLALPEHFPEKERLLREAEYFQLTDLVKLLSPKVTKQNSLNDEGCQSDLEDNVS
QGSSDALLLRGAAAAPSPGPAHGGGGGGGAQDKRSGFLTLYRGSYTTVRDNQ
ADAKFRRVARIMVCGRIALAKEVFGDTLNESRDPDRQPEKYTSRFYLKFTYLEQAFD
RLSEAGFHMVACNSSGTAAFVNQYRDDKIWSSYTEYIFFRPPQKIVSPKQEHEDRK
HDKVTDKGSESGTSCNELSTSSCDHSEASTPQDNPSSAQQATAHQPNLTLDRP
SKKAPVQWIPPPDKRRNSELFQTLISKSRETNLSKKKVCEKLSVEEEMKKCIQDFKKI
HIPDYFPERKRQWQSELLQKYGLTRTRPLEQKLISEEDLAANDILDYKDDDDKV
```

 Tel: 1-631-559-9269 1-516-512-3133

 Email: info@creative-biomart.com  Fax: 1-631-938-8127

 45-1 Ramsey Road, Shirley, NY 11967, USA

Purity	> 80% as determined by SDS-PAGE and Coomassie blue staining
Stability	Stable for 3 months from receipt of products under proper storage and handling conditions.
Storage	Store at -80 centigrade. Avoid repeated freeze-thaw cycles.
Concentration	50 µg/mL as determined by BCA
Storage Buffer	100 mM glycine, 25 mM Tris-HCl, pH 7.3.

GENE INFORMATION

Gene Name	KCTD8 potassium channel tetramerisation domain containing 8 [Homo sapiens (human)]
Official Symbol	KCTD8
Synonyms	KCTD8; potassium channel tetramerisation domain containing 8; BTB/POZ domain-containing protein KCTD8;
Gene ID	386617
mRNA Refseq	NM_198353
Protein Refseq	NP_938167
MIM	618442
UniProt ID	Q6ZWB6

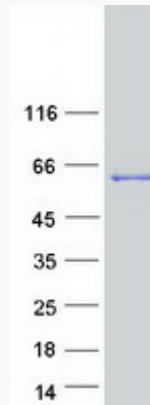
 Tel: 1-631-559-9269 1-516-512-3133

 Email: info@creative-biomart.com  Fax: 1-631-938-8127

 45-1 Ramsey Road, Shirley, NY 11967, USA



SDS-PAGE



Tel: 1-631-559-9269 1-516-512-3133

Email: info@creative-biomart.com Fax: 1-631-938-8127

45-1 Ramsey Road, Shirley, NY 11967, USA