

## Recombinant Human KDM1A protein, His-tagged

Cat. No. KDM1A-6855H Lot. No. (See product label)

### SPECIFICATION

<b>Product Overview</b>	Recombinant Human KDM1A protein(Met158~Met852), fused with N-terminal His tag, was expressed in E. coli.
<b>Species</b>	Human
<b>Source</b>	E. coli
<b>ProteinLength</b>	158-852 aa
<b>Form</b>	Lyophilized from PBS, pH7.4, containing 0.01% SKL, 5% Trehalose.
<b>Molecular Mass</b>	81.1kDa
<b>Endotoxin</b>	<1.0EU per 1g (determined by the LAL method)
<b>Purity</b>	> 80%
<b>Storage</b>	Avoid repeated freeze/thaw cycles. Store at 2-8°C for one month, -20°C for 12 months. Aliquot and store at -80°C for 12 months.
<b>Reconstitution</b>	Reconstitute in 10mM PBS (pH7.4) to a concentration of 0.1-1.0 mg/mL. Do not vortex.

### GENE INFORMATION

 Tel: 1-631-559-9269 1-516-512-3133

 Email: [info@creative-biomart.com](mailto:info@creative-biomart.com)  Fax: 1-631-938-8127

 45-1 Ramsey Road, Shirley, NY 11967, USA

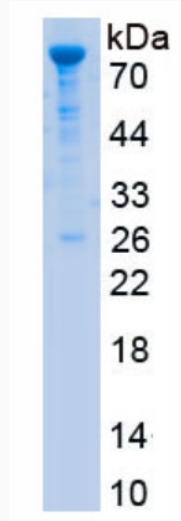
<b>Gene Name</b>	KDM1A lysine (K)-specific demethylase 1A [ Homo sapiens ]
<b>Official Symbol</b>	KDM1A
<b>Synonyms</b>	KDM1A; lysine (K)-specific demethylase 1A; amine oxidase (flavin containing) domain 2 , AOF2, KDM1, lysine (K) specific demethylase 1; lysine-specific histone demethylase 1A; BHC110; KIAA0601; LSD1; lysine (K)-specific demethylase 1; BRAF35-HDAC complex protein BHC110; lysine-specific histone demethylase 1; amine oxidase (flavin containing) domain 2; FAD-binding protein BRAF35-HDAC complex, 110 kDa subunit; flavin-containing amine oxidase domain-containing protein 2; AOF2; KDM1
<b>mRNA Refseq</b>	NM_015013
<b>Protein Refseq</b>	NP_055828
<b>MIM</b>	609132
<b>UniProt ID</b>	O60341
<b>Gene ID</b>	23028

 Tel: 1-631-559-9269 1-516-512-3133

 Email: [info@creative-biomart.com](mailto:info@creative-biomart.com)  Fax: 1-631-938-8127

 45-1 Ramsey Road, Shirley, NY 11967, USA

SDS-PAGE



 Tel: 1-631-559-9269 1-516-512-3133

 Email: [info@creative-biomart.com](mailto:info@creative-biomart.com)  Fax: 1-631-938-8127

 45-1 Ramsey Road, Shirley, NY 11967, USA