

Recombinant Full Length Human KDM1A Protein, C-Flag-tagged

Cat. No. KDM1A-747HFL **Lot. No.** (See product label)

SPECIFICATION

Product Overview	Recombinant Full Length Human KDM1A Protein, fused to Flag-tag at C-terminus, was expressed in Mammalian cells.
Species	Human
Source	Mammalian Cells
Description	This gene encodes a nuclear protein containing a SWIRM domain, a FAD-binding motif, and an amine oxidase domain. This protein is a component of several histone deacetylase complexes, though it silences genes by functioning as a histone demethylase. Alternative splicing results in multiple transcript variants.
Form	25 mM Tris HCl, pH 7.3, 100 mM glycine, 10% glycerol.
Molecular Mass	95.6 kDa
AA Sequence	<p>MLSGKKAIAAAAAAAAAAATGTEAGPGTAGGSENGSEVAAQPAGLSGPAEVGPGAV GERTPRKKEPPRASP PGGLAEPGPSAGPQAGPTVVPGSATPMETGIAETPEGRRT SRRKRAKVEYREMDESLANLSEDEYYSEEE RNAKAEKEKKLPPPPPQAPPEEENE SEPEEPSGQAGGLQDDSSGGYGDGQASGVEGAAFQSRLPHDRMTS QEAACFPDII SGPQQTQKVFLFIRNRTLQLWLDNPKIQLTFEATLQQLEAPYNSDVLVHRVHSTYLE RHG LINGIYKRIKPLPTKKTGKVIIGSGVSGLAAARQLQSFGMDVTLLEARDRVGG RVATFRKGNVADLG AMVVTGLGGNPMAVVSQVNMELAKIKQKCPLYEANGQAD TVKVPKEKDEMVEQEFNRLLEATSYLSHQL DFNVLNNKPVSLGQALEVVIQLQEKH</p>

 Tel: 1-631-559-9269 1-516-512-3133

 Email: info@creative-biomart.com  Fax: 1-631-938-8127

 45-1 Ramsey Road, Shirley, NY 11967, USA

VKDEQIEHWKKIVKTQEELKELLNKMVNLKEKIKELHQQYKEAS EVKPPRDITAEFLV
 KSKHRDLTALCKEYDELAETQGKLEEKLQELEANPPSDVYLSSRDRQILDWHFANL
 EFANATPLSTLSLKHWDQDDDFEFTGSHLTVRNGYSCVPVALAEGLDIKLNTAVRQV
 RYTASGCEVI AVN TRSTSQTFIYKCDAVLCTLPLGV LKQQPPAVQFVPLPEWKTSA
 VQRMGFGNLNKVVLFCFDRVFWDP SVN LFGHVGSTTASRGELFLFWNLYKAPILLAL
 VAGEAAGIMENISDDVIVGRCLA ILKGIFGSSAVPQPKET VVSRWRADPWARGSYSY
 VAAGSSGNDYDLMAQPITGPSIPGAPQPI PRLFFAGEHTIRNYPATVHGALL
 SGLREAGRIADQFLGAMYTLPRQATPGVPAQQSPSMTRTRPLEQKLISEEDLAANDI
 LDYKDDDDKV

Purity	> 80% as determined by SDS-PAGE and Coomassie blue staining.
Stability	Stable for 12 months from the date of receipt of the product under proper storage and handling conditions. Avoid repeated freeze-thaw cycles.
Storage	Store at -80 centigrade.
Concentration	>50 ug/mL as determined by microplate BCA method.
Preparation	Recombinant protein was captured through anti-DDK affinity column followed by conventional chromatography steps.
Protein Families	Druggable Genome, Transcription Factors
Full Length	Full L.

GENE INFORMATION

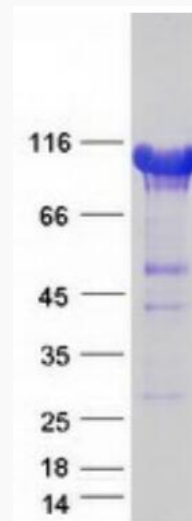
Gene Name	KDM1A lysine demethylase 1A [Homo sapiens (human)]
Official Symbol	KDM1A

 Tel: 1-631-559-9269 1-516-512-3133

 Email: info@creative-biomart.com  Fax: 1-631-938-8127

 45-1 Ramsey Road, Shirley, NY 11967, USA

Synonyms	AOF2; CPRF; KDM1; LSD1; BHC110
Gene ID	23028
mRNA Refseq	NM_001009999.3
Protein Refseq	NP_001009999.1
MIM	609132
UniProt ID	O60341



Coomassie blue staining of purified KDM1A protein.

 Tel: 1-631-559-9269 1-516-512-3133

 Email: info@creative-biomart.com  Fax: 1-631-938-8127

 45-1 Ramsey Road, Shirley, NY 11967, USA