

Recombinant Human KDM2A protein, GST-tagged

Cat. No. KDM2A-300H **Lot. No.** (See product label)

SPECIFICATION

Product Overview	Recombinant Human KDM2A protein(374-558 aa), fused with N-terminal GST tag, was expressed in E. coli.
Species	Human
Source	E.coli
ProteinLength	374-558 aa
Form	The purified protein was Lyophilized from sterile PBS (58mM Na ₂ HPO ₄ , 17mM NaH ₂ PO ₄ , 68mM NaCl, pH7.4). 5 % trehalose and 5 % mannitol are added as protectant before lyophilization.
Storage	Short-term storage: Store at 2-8°C for (1-2 weeks). Long-term storage: Aliquot and store at -20°C to -80°C for up to 3 months, reconstitution with sterile water and addition of an equal volume of glycerol. Avoid repeat freeze-thaw cycles.
AA Sequence	DEEAVDREPRRLSSRRSVLTSPVANGVNLDYDGLGKTCRSLPSLKKTLAGDSSSDC SRGSHNGQVWDPQCAPRKDRQVHLTHFELEGLRCLVDKLESLPLHKKCVPTGIEDE DALIADVKILLEELANSDPKLALTGVPIVQWPKRDKLKFTRPKVRVPTIPITKPHTMK PAPRLTPVRPAAAS
Purity	85%, by SDS-PAGE with Coomassie Brilliant Blue staining.

GENE INFORMATION

 Tel: 1-631-559-9269 1-516-512-3133

 Email: info@creative-biomart.com  Fax: 1-631-938-8127

 45-1 Ramsey Road, Shirley, NY 11967, USA

Official Symbol	KDM2A
Synonyms	KDM2A; lysine (K)-specific demethylase 2A; F box and leucine rich repeat protein 11 , FBXL11; lysine-specific demethylase 2A; CXXC8; DKFZP434M1735; F box protein FBL11; FBL7; FBL11; FLJ00115; JHDM1A; jumonji C domain containing histone demethylase 1A; KIAA1004; LILINA; F-box/LRR-repeat protein 11; CXXC-type zinc finger protein 8; [Histone-H3]-lysine-36 demethylase 1A; F-box and leucine-rich repeat protein 11; jumonji C domain-containing histone demethylase 1A; jmjC domain-containing histone demethylation protein 1A; FBXL11; FLJ46431; DKFZp434M1735;
Gene ID	22992
mRNA Refseq	NM_001256405
Protein Refseq	NP_001243334
MIM	605657
UniProt ID	Q9Y2K7

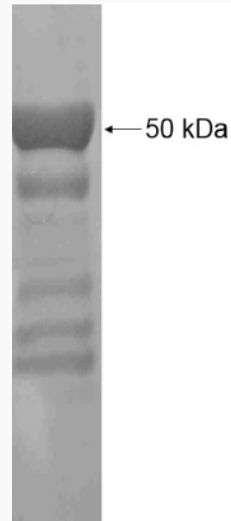
 Tel: 1-631-559-9269 1-516-512-3133

 Email: info@creative-biomart.com  Fax: 1-631-938-8127

 45-1 Ramsey Road, Shirley, NY 11967, USA



SDS-PAGE



Tel: 1-631-559-9269 1-516-512-3133

Email: info@creative-biomart.com Fax: 1-631-938-8127

45-1 Ramsey Road, Shirley, NY 11967, USA