

Recombinant Human lysine demethylase 3A Protein, His tagged

Cat. No. KDM3A-001H **Lot. No.** (See product label)

SPECIFICATION

Product Overview	Recombinant Human KDM3A Protein with His tag was expressed in E. coli.
Species	Human
Source	E.coli
ProteinLength	844-968 aa
Description	Enables histone H3K9me/H3K9me2 demethylase activity; iron ion binding activity; and nuclear androgen receptor binding activity. Involved in androgen receptor signaling pathway; formaldehyde biosynthetic process; and positive regulation of DNA-templated transcription. Located in nucleoplasm. Implicated in cervical cancer and colon cancer. Biomarker of Ewing sarcoma; hepatocellular carcinoma; nasopharynx carcinoma; and prostate cancer.
Tag	C-His
Molecular Mass	15 kDa
AA Sequence	MPILKNEIKCLPPLPPLSKSSTVLHTFNSTILTPVSNNNSGFLRNLLNSSTGKTENGLK NTPKILDDIFASLVQNKTTSDLSKRPQGLTIKPSILGFDTPHYWLCDNRLLCLQDPNN KSNWNVFREHHHHHHHHH
Endotoxin	< 1 EU/μg by LAL

 Tel: 1-631-559-9269 1-516-512-3133

 Email: info@creative-biomart.com  Fax: 1-631-938-8127

 45-1 Ramsey Road, Shirley, NY 11967, USA

Purity	> 90% by SDS-PAGE
Storage	Store it under sterile conditions at -20 to -80 centigrade. It is recommended that the protein be aliquoted for optimal storage. Avoid repeated freeze-thaw cycles.
Storage Buffer	Sterile from PBS, pH7.4, 8% Trehalose, 10% Glycerol
Concentration	1 mg/mL by BCA

GENE INFORMATION

Gene Name	KDM3A lysine demethylase 3A [Homo sapiens (human)]
Official Symbol	KDM3A
Synonyms	KDM3A; lysine (K)-specific demethylase 3A; JMJD1, JMJD1A, jumonji domain containing 1, jumonji domain containing 1A; lysine-specific demethylase 3A; JHMD2A; jumonji C domain containing histone demethylase 2A; KIAA0742; TSGA; testis-specific protein A; jumonji domain containing 1; jumonji domain containing 1A; jumonji domain-containing protein 1A; jumonji C domain-containing histone demethylase 2A; jmjC domain-containing histone demethylation protein 2A; JMJD1; JHDM2A; JMJD1A; DKFZp686A24246; DKFZp686P07111
Gene ID	55818
mRNA Refseq	NM_001146688
Protein Refseq	NP_001140160
MIM	611512

 Tel: 1-631-559-9269 1-516-512-3133

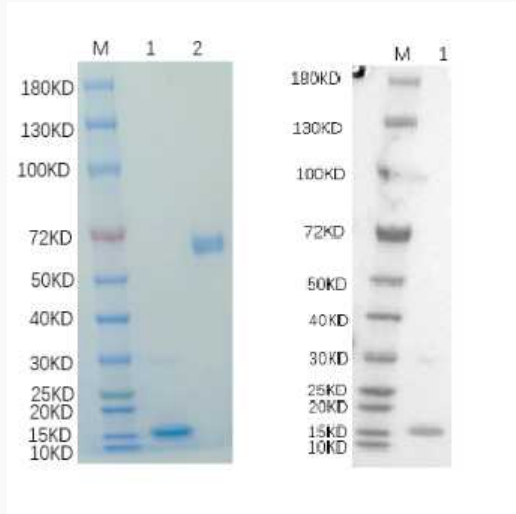
 Email: info@creative-biomart.com  Fax: 1-631-938-8127

 45-1 Ramsey Road, Shirley, NY 11967, USA

UniProt ID

Q9Y4C1

Reducing 4%-20%
SDS-PAGE (CBB
stained) and WB
(Anti-His Mouse
Monoclonal
antibody) analysis
profiles of purified
KDM3A.



1. KDM3A
2. BSA

 Tel: 1-631-559-9269 1-516-512-3133

 Email: info@creative-biomart.com  Fax: 1-631-938-8127

 45-1 Ramsey Road, Shirley, NY 11967, USA