

Recombinant Human lysine demethylase 3A Protein, His tagged

Cat. No. KDM3A-067H **Lot. No.** (See product label)

SPECIFICATION

Product Overview	Recombinant human KDM3A protein (Q9Y4C1) (Met 1-Arg 358) with a His tag at the C-terminus was expressed in E. coli.
Species	Human
Source	E.coli
ProteinLength	1-358aa
Description	Histone demethylase that specifically demethylates 'Lys-9' of histone H3, thereby playing a central role in histone code. Preferentially demethylates mono- and dimethylated H3 'Lys-9' residue, with a preference for dimethylated residue, while it has weak or no activity on trimethylated H3 'Lys-9'. Demethylation of Lys residue generates formaldehyde and succinate. Involved in hormone-dependent transcriptional activation, by participating in recruitment to androgen-receptor target genes, resulting in H3 'Lys-9' demethylation and transcriptional activation. Involved in spermatogenesis by regulating expression of target genes such as PRM1 and TNP1 which are required for packaging and condensation of sperm chromatin. Involved in obesity resistance through regulation of metabolic genes such as PPARA and UCP1.
Tag	C-His
Molecular Mass	41.1 kDa

 Tel: 1-631-559-9269 1-516-512-3133

 Email: info@creative-biomart.com  Fax: 1-631-938-8127

 45-1 Ramsey Road, Shirley, NY 11967, USA

Endotoxin	Less than 1.0 EU/μg by the LAL method.
Purity	>90% as determined by SDS-PAGE.
Storage	Please avoid repeated freeze-thaw cycles. Samples are stable for up to twelve months from date of receipt at -20 to -80 centigrade. It is recommended that aliquot the reconstituted solution to minimize freeze-thaw cycles.
Storage Buffer	Lyophilized from a 0.2 μm filtered solution of PBS, pH7.4, 5% Trehalose, 5% mannitol.
Reconstitution	Reconstitute at 250 μg/mL in sterile water.
GENE INFORMATION	
Gene Name	KDM3A lysine demethylase 3A [Homo sapiens (human)]
Official Symbol	KDM3A
Synonyms	KDM3A; lysine (K)-specific demethylase 3A; JMJD1, JMJD1A, jumonji domain containing 1, jumonji domain containing 1A; lysine-specific demethylase 3A; JHMD2A; jumonji C domain containing histone demethylase 2A; KIAA0742; TSGA; testis-specific protein A; jumonji domain containing 1; jumonji domain containing 1A; jumonji domain-containing protein 1A; jumonji C domain-containing histone demethylase 2A; jmjC domain-containing histone demethylation protein 2A; JMJD1; JHDM2A; JMJD1A; DKFZp686A24246; DKFZp686P07111;
Gene ID	55818
mRNA Refseq	NM_001146688

 Tel: 1-631-559-9269 1-516-512-3133

 Email: info@creative-biomart.com  Fax: 1-631-938-8127

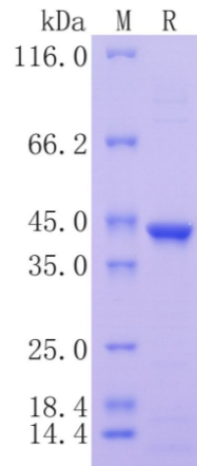
 45-1 Ramsey Road, Shirley, NY 11967, USA

Protein Refseq NP_001140160

MIM 611512

UniProt ID Q9Y4C1

Protein on SDS-PAGE under reducing (R) condition.



 Tel: 1-631-559-9269 1-516-512-3133

 Email: info@creative-biomart.com  Fax: 1-631-938-8127

 45-1 Ramsey Road, Shirley, NY 11967, USA