

Recombinant Human KDM4A Protein, His-tagged

Cat. No. KDM4A-018H **Lot. No.** (See product label)

SPECIFICATION

Product Overview	Recombinant Human KDM4A protein with a N-terminal His-tag was expressed in E.coli
Species	Human
Source	E.coli
Description	This gene is a member of the Jumonji domain 2 (JMJD2) family and encodes a protein containing a JmjN domain, a JmjC domain, a JD2H domain, two TUDOR domains, and two PHD-type zinc fingers. This nuclear protein functions as a trimethylation-specific demethylase, converting specific trimethylated histone residues to the dimethylated form, and as a transcriptional repressor.
Molecular Mass	43 kDa
Purity	≥95% estimated by SDS-PAGE
Stability	≥ 6 months
Storage	-80 centigrade
Storage Buffer	50 mM HEPES, pH 7.4, containing 150 mM sodium chloride and 20% glycerol
Shipping	Dry ice in continental US, may vary elsewhere.

 Tel: 1-631-559-9269 1-516-512-3133

 Email: info@creative-biomart.com  Fax: 1-631-938-8127

 45-1 Ramsey Road, Shirley, NY 11967, USA

GENE INFORMATION

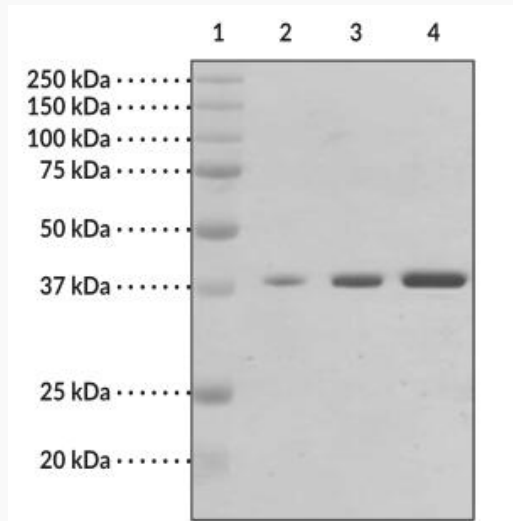
Gene Name	KDM4A lysine demethylase 4A [Homo sapiens (human)]
Official Symbol	KDM4A
Synonyms	KDM4A; lysine demethylase 4A; JMJD2; JHDM3A; JMJD2A; TDRD14A; lysine-specific demethylase 4A; [histone H3]-trimethyl-L-lysine(36) demethylase 4A; [histone H3]-trimethyl-L-lysine(9) demethylase 4A; jmjC domain-containing histone; demethylation protein 3A; jumonji C domain-containing histone demethylase 3A; jumonji domain containing 2; jumonji domain containing 2A; jumonji domain-containing protein 2A; lysine (K)-specific demethylase 4A; tudor domain containing 14A; EC 1.14.11.66; EC 1.14.11.69
Gene ID	9682
mRNA Refseq	NM_014663
Protein Refseq	NP_055478
MIM	609764
UniProt ID	O75164

 Tel: 1-631-559-9269 1-516-512-3133

 Email: info@creative-biomart.com  Fax: 1-631-938-8127

 45-1 Ramsey Road, Shirley, NY 11967, USA

**SDS-PAGE analysis
of KDM4A**



Lane 1: MW Markers
Lane 2: JMJD2A (1 g)
Lane 3: JMJD2A (2 g)
Lane 4: JMJD2A (4 g)

 Tel: 1-631-559-9269 1-516-512-3133

 Email: info@creative-biomart.com  Fax: 1-631-938-8127

 45-1 Ramsey Road, Shirley, NY 11967, USA