

Recombinant Full Length Human KDM4A Protein, C-Flag-tagged

Cat. No. KDM4A-1991HFL **Lot. No.** (See product label)

SPECIFICATION

Product Overview	Recombinant Full Length Human KDM4A Protein, fused to Flag-tag at C-terminus, was expressed in Mammalian cells.
Species	Human
Source	Mammalian Cells
Description	This gene is a member of the Jumonji domain 2 (JMJD2) family and encodes a protein containing a JmjN domain, a JmjC domain, a JD2H domain, two TUDOR domains, and two PHD-type zinc fingers. This nuclear protein functions as a trimethylation-specific demethylase, converting specific trimethylated histone residues to the dimethylated form, and as a transcriptional repressor.
Form	25 mM Tris HCl, pH 7.3, 100 mM glycine, 10% glycerol.
Molecular Mass	120.5 kDa
AA Sequence	<p>MASESETLNPSARIMTFYPTMEEFRNFSRYIAYIESQGAHRAGLAKVPPKEWKPRA SYDDIDDLVIPAP IQQLVTGQSGFLTQYNIQKKAMTVREFRKIANSKDYCTPRYSEFE ELERKYWKNLTFNPPIYGADVNGTL YEKHVDEWNIGRLRILTDLVEKESGITIEGVNT PYLYFGMWKTSFAWHTEDMDLYSINYLHFGEPKSWYS VPPEHGKRLERLAKGFFP GSAQSCEAFLRHKMTLISPLMLKKYGIPFDKVTQEAGEFMITFPYGYHAGFN HGFN CAESTNFATRRWIEYGKQAVLCSCRKDMVKISMDVFRKQPERYKLWKAGKDNT VIDHTLPTPEA AEFLKESELPPRAGNEEECEPEEDMEGVEDGEEDLKTSLAKHRIGT</p>

 Tel: 1-631-559-9269 1-516-512-3133

 Email: info@creative-biomart.com  Fax: 1-631-938-8127

 45-1 Ramsey Road, Shirley, NY 11967, USA

KRHRVCLEIPQEVSQSELPKEDL SSEQYEMTECPAALAPVRPTHSSVRQVEDGLT
 FPDYSDSTEVKFEELKNVKLEEEDEEEEQEAAALDSV NPASVGGRLVFGSGKKKS
 SSSLGSGSSRDSISSDSETSEPLSCRAQGQTGVLTVHSYAKGDGRVTVGEPCTRK
 KGSAARFSERELAEVADEYMFSLEENKKS KGRRQPLSKLPRHHPLVLQECVSDDE
 TSEQLTPEEEA EETEAWAKPLSQLWQNRPPNFEEAEKEFNETMAQQAPHCAVCMIF
 QTYHQVEFGGFNQNCGNASDLAPQKQ RTKPLIPEMCFSTSTGCSTDINLSTPYLEED
 GTSILVSCCKCSVRVHASCYGVPPAKASEDWMCSRCSANA LEEDCCLCSLRGGAL
 QRANDDRWWHVSCAVALLEARFVNIAERSPVDVSKIPLPRFKLKCIFCKRRRKRT AG
 CCVQC SHGRCPTAFHVSCAQAAGVMMQPDDWPFVVFITCFRHKIPNLERAKGALQ
 SITAGQKVISKHK NGRFYQCEVVRLTTETFYEVNFDDGSFSDNLYPEDIVSQDCLQF
 GPPAEGEVVQVRWTDGQVYGAKFVAS HPIQMYQVEFEDGSQVLVVKRDDVYTLDE
 ELPKRKVSRLSVASDMRFNEIFTEKEVKQEKKRQRVINSRYR EDYIEPALYRAIME T
 RTRPLEQKLISEEDLAANDILDYKDDDDKV

Purity	> 80% as determined by SDS-PAGE and Coomassie blue staining.
Stability	Stable for 12 months from the date of receipt of the product under proper storage and handling conditions. Avoid repeated freeze-thaw cycles.
Storage	Store at -80 centigrade.
Concentration	>50 ug/mL as determined by microplate BCA method.
Preparation	Recombinant protein was captured through anti-DDK affinity column followed by conventional chromatography steps.
Protein Families	Druggable Genome, Transcription Factors
Full Length	Full L.

 Tel: 1-631-559-9269 1-516-512-3133

 Email: info@creative-biomart.com  Fax: 1-631-938-8127

 45-1 Ramsey Road, Shirley, NY 11967, USA

GENE INFORMATION

Gene Name KDM4A lysine demethylase 4A [Homo sapiens (human)]

Official Symbol KDM4A

Synonyms JMJD2; JHDM3A; JMJD2A; TDRD14A

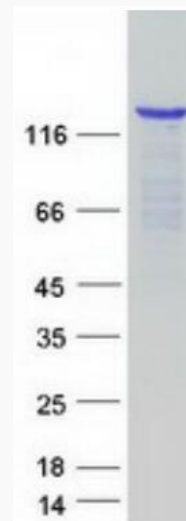
Gene ID 9682

mRNA Refseq NM_014663.3

Protein Refseq NP_055478.2

MIM 609764

UniProt ID O75164



 Tel: 1-631-559-9269 1-516-512-3133

 Email: info@creative-biomart.com  Fax: 1-631-938-8127

 45-1 Ramsey Road, Shirley, NY 11967, USA



Coomassie blue staining of purified KDM4A protein.

 Tel: 1-631-559-9269 1-516-512-3133

 Email: info@creative-biomart.com  Fax: 1-631-938-8127

 45-1 Ramsey Road, Shirley, NY 11967, USA