

Recombinant Human KDM4A Protein, Myc/DDK-tagged, C13 and N15-labeled

Cat. No. KDM4A-4902H Lot. No. (See product label)

SPECIFICATION

Product Overview

KDM4A MS Standard C13 and N15-labeled recombinant protein (NP_055478) with a C-terminal MYC/DDK tag, was expressed in HEK293 cells.

Species

Human

Source

HEK293

Description

This gene is a member of the Jumonji domain 2 (JMJD2) family and encodes a protein containing a JmjN domain, a JmjC domain, a JD2H domain, two TUDOR domains, and two PHD-type zinc fingers. This nuclear protein functions as a trimethylation-specific demethylase, converting specific trimethylated histone residues to the dimethylated form, and as a transcriptional repressor.

Molecular Mass

120.7 kDa

AA Sequence

MASESETLNPSARIMTFYPTMEEFRNFSRYIAYIESQGAHRAGLAKVVPPKEWKPRA
 SYDDIDDLVIPAPIQQLVTGQSGLFYQYNIQKKAMTVREFRKIANSKDYCTPRYSEFE
 ELERKYWKNLTFNPPIYGADVNGTLYEKHVDEWNIGRLRTILDVLEKESGITIEGVNT
 PYLYFGMWKTSFAWHTEDMDLYSINYLHFGEPKSWYSVPPEHGKRLERLAKGFFP
 GSAQSCEAFLRHKMTLISPLMLKKYGIPFDKVTQEAGEFMITFPYGYHAGFNHGFNC
 AESTNFATRRWIEYGKQAVLCSCRKDMVKISMDVFVRKFQPERYKLWKAGKDNTVI
 DHTLPTPEAAEFLKESELPPRAGNEEECPPEEDMEGVEDGEEGDLKTSLAKHRIGTK
 RHRVCLEIPQEVSQSELPKEDLSSEQYEMTECPAALAPVRPTHSSVRQVEDGLTF

Tel: 1-631-559-9269 1-516-512-3133

Email: info@creative-biomart.com Fax: 1-631-938-8127

45-1 Ramsey Road, Shirley, NY 11967, USA

PDYSDSTEVKFEELKNVKLEEEDEEEEEQEAAALDLSVNPASVGGRLVFGSGSKKKSS
 SSLGSGSSRDSISSDSETSEPLSCRAQGQTGVLTVHSYAKGDGRVTVGEPCTRKKG
 SAARFSERELAEVADEYMFSLLENKKSkgRRQPLSKLPRHHPLVLQECVSDDETS
 EQLTPEEEAEETEAWAKPLSQLWQNRPPNFEAEKEFNETMAQQAPHCAVCMIFQT
 YHQVEFGGFNQNGNASDLAPQKQRTKPLIPEMCFTSTGCSTDINLSTPYLEEDGT
 SILVSCKKCSVRVHASCYGVPPAKASEDWMCSRCSANALEEDCCLCSLRGGALQR
 ANDDRWWHVSCAVAILEARFVNIAERSPV DVSKIPLPRFKLKCIFCKRRKRTAGCCV
 QCSHGRCPTAFHVSCAQAAGVMMQPDDWPFVVFITCFRHKIPNLERAKGALQSITA
 GQKVISKHKNGRFYQCEVVRLTTETFYEVNFDDGSFSDNLYPEDIVSQDCLQFGPP
 AEGEVVQVRWTDGQVYGAKFVASHPIQMYQVEFEDGSQLVVKRDDVYTLDEELPK
 RVKSRLSVASDMRFNEIFTEKEVKQEKKRQRVINSRYREDYIEPALYRAIMETRTRPL
 EQKLISEEDLAANDILDYKDDDDKV

| | |
|-----------------------|--|
| Purity | > 80% as determined by SDS-PAGE and Coomassie blue staining |
| Stability | Stable for 3 months from receipt of products under proper storage and handling conditions. |
| Storage | Store at -80 centigrade. Avoid repeated freeze-thaw cycles. |
| Concentration | 50 µg/mL as determined by BCA |
| Storage Buffer | 100 mM glycine, 25 mM Tris-HCl, pH 7.3. |

GENE INFORMATION

| | |
|------------------------|--|
| Gene Name | KDM4A lysine demethylase 4A [Homo sapiens (human)] |
| Official Symbol | KDM4A |
| Synonyms | KDM4A; lysine (K)-specific demethylase 4A; JMJD2, JMJD2A, jumonji domain |

containing 2, jumonji domain containing 2A; lysine-specific demethylase 4A; JHDM3A; jumonji C domain containing histone demethylase 3A; KIAA0677; jumonji domain containing 2; jumonji domain containing 2A; jumonji domain-containing protein 2A; jumonji C domain-containing histone demethylase 3A; jmjC domain-containing histone demethylation protein 3A; JMJD2; JMJD2A;

Gene ID [9682](#)

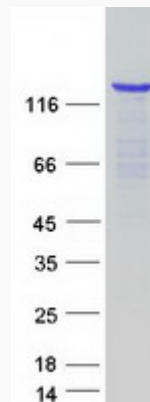
mRNA Refseq [NM_014663](#)

Protein Refseq [NP_055478](#)

MIM [609764](#)

UniProt ID [O75164](#)

SDS-PAGE



 Tel: 1-631-559-9269 1-516-512-3133

 Email: info@creative-biomart.com  Fax: 1-631-938-8127

 45-1 Ramsey Road, Shirley, NY 11967, USA