

Recombinant Human KDM4A Protein, His-tagged

Cat. No. KDM4A-574H **Lot. No.** (See product label)

SPECIFICATION

| | |
|-------------------------|--|
| Product Overview | Recombinant Human KDM4A(Tyr141~Lys310) fused with His tag at N-terminal was expressed in E. coli. |
| Species | Human |
| Source | E.coli |
| ProteinLength | Tyr141~Lys310 |
| Description | This gene is a member of the Jumonji domain 2 (JMJD2) family and encodes a protein containing a JmjN domain, a JmjC domain, a JD2H domain, two TUDOR domains, and two PHD-type zinc fingers. This nuclear protein functions as a trimethylation-specific demethylase, converting specific trimethylated histone residues to the dimethylated form, and as a transcriptional repressor. |
| Form | PBS, pH7.4, containing 0.01% SKL, 1mM DTT, 5% Trehalose and Proclin300. |
| Molecular Mass | 23.5kDa |
| Endotoxin | <1.0EU per 1g (determined by the LAL method) |
| Purity | > 95% |
| Applications | Positive Control; Immunogen; SDS-PAGE; WB. If bio-activity of the protein is needed, please check active protein. |

 Tel: 1-631-559-9269 1-516-512-3133

 Email: info@creative-biomart.com  Fax: 1-631-938-8127

 45-1 Ramsey Road, Shirley, NY 11967, USA

Stability The thermal stability is described by the loss rate. The loss rate was determined by accelerated thermal degradation test, that is, incubate the protein at 37 centigrade for 48h, and no obvious degradation and precipitation were observed. The loss rate is less than 5% within the expiration date under appropriate storage condition.

Storage Avoid repeated freeze/thaw cycles. Store at 2-8 centigrade for one month. Aliquot and store at -80 centigrade for 12 months.

Reconstitution Reconstitute in PBS or others.

GENE INFORMATION

Gene Name [KDM4A lysine \(K\)-specific demethylase 4A \[Homo sapiens \]](#)

Official Symbol [KDM4A](#)

Synonyms KDM4A; lysine (K)-specific demethylase 4A; JMJD2, JMJD2A, jumonji domain containing 2 , jumonji domain containing 2A; lysine-specific demethylase 4A; JHDM3A; jumonji C domain containing histone demethylase 3A; KIAA0677; jumonji domain containing 2; jumonji domain containing 2A; jumonji domain-containing protein 2A; jumonji C domain-containing histone demethylase 3A; jmjC domain-containing histone demethylation protein 3A; JMJD2; JMJD2A;

Gene ID [9682](#)

mRNA Refseq [NM_014663](#)

Protein Refseq [NP_055478](#)

MIM [609764](#)

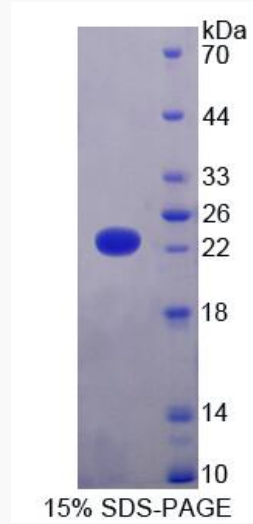
 Tel: 1-631-559-9269 1-516-512-3133

 Email: info@creative-biomart.com  Fax: 1-631-938-8127

 45-1 Ramsey Road, Shirley, NY 11967, USA

UniProt ID

O75164



 Tel: 1-631-559-9269 1-516-512-3133

 Email: info@creative-biomart.com  Fax: 1-631-938-8127

 45-1 Ramsey Road, Shirley, NY 11967, USA