

Recombinant Human KDM4C Protein, GST-tagged

Cat. No. KDM4C-031H Lot. No. (See product label)

SPECIFICATION

Product Overview	Recombinant N-terminal GST-tagged human KDM4C protein was expressed in E. coli.
Species	Human
Source	E.coli
Description	This gene is a member of the Jumonji domain 2 (JMJD2) family. The encoded protein is a trimethylation-specific demethylase, and converts specific trimethylated histone residues to the dimethylated form. This enzymatic action regulates gene expression and chromosome segregation. Chromosomal aberrations and changes in expression of this gene may be found in tumor cells. Alternative splicing results in multiple transcript variants.
Molecular Mass	39.89 kDa
Purity	Estimated by SDS-PAGE
Stability	≥ 6 months
Storage	At -80 centigrade.
Storage Buffer	50 mM Tris, pH 7.5, containing 150 mM sodium chloride and 20% glycerol

GENE INFORMATION

 Tel: 1-631-559-9269 1-516-512-3133

 Email: info@creative-biomart.com  Fax: 1-631-938-8127

 45-1 Ramsey Road, Shirley, NY 11967, USA

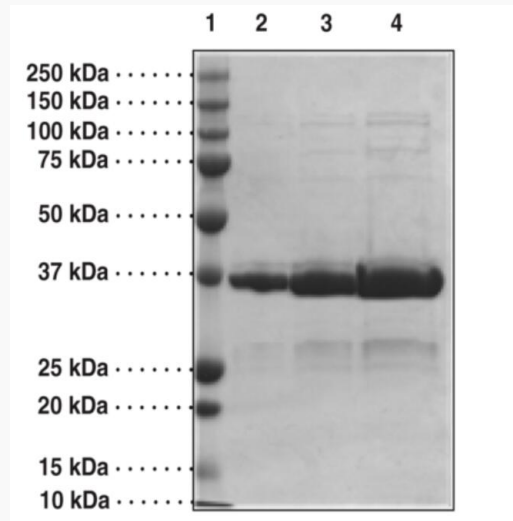
Gene Name	KDM4C lysine demethylase 4C [Homo sapiens (human)]
Official Symbol	KDM4C
Synonyms	KDM4C; lysine demethylase 4C; lysine-specific demethylase 4C; JmjC domain-containing histone demethylation protein 3C; [histone H3]-trimethyl-L-lysine(9) demethylase 4C; gene amplified in squamous cell carcinoma 1 protein; jumonji domain-containing protein 2C; lysine (K)-specific demethylase 4C; tudor domain containing 14C; EC 1.14.11.66
Gene ID	23081
mRNA Refseq	NM_015061
Protein Refseq	NP_055876
MIM	605469
UniProt ID	Q9H3R0

 Tel: 1-631-559-9269 1-516-512-3133

 Email: info@creative-biomart.com  Fax: 1-631-938-8127

 45-1 Ramsey Road, Shirley, NY 11967, USA

**SDS-PAGE analysis
of KDM4C**



Lane 1: MW Markers

Lane 2: JMJD2C Tudor (2 µg)

Lane 3: JMJD2C Tudor (5 µg)

Lane 4: JMJD2C Tudor (10 µg)

 Tel: 1-631-559-9269 1-516-512-3133

 Email: info@creative-biomart.com  Fax: 1-631-938-8127

 45-1 Ramsey Road, Shirley, NY 11967, USA