

## Recombinant Human KDM4D Protein, His-tagged

Cat. No. KDM4D-124H    Lot. No. (See product label)

### SPECIFICATION

<b>Product Overview</b>	Active recombinant N-terminal His-tagged human KDM4D protein was expressed in E. coli.
<b>Species</b>	Human
<b>Source</b>	E.coli
<b>Description</b>	Histone demethylase that specifically demethylates 'Lys-9' of histone H3, thereby playing a central role in histone code. Does not demethylate histone H3 'Lys-4', H3 'Lys-27', H3 'Lys-36' nor H4 'Lys-20'. Demethylates both di- and trimethylated H3 'Lys-9' residue, while it has no activity on monomethylated residues. Demethylation of Lys residue generates formaldehyde and succinate.
<b>Molecular Mass</b>	42.7 kDa
<b>Purity</b>	≥75% estimated by SDS-PAGE
<b>Unit Definition</b>	One unit of activity is defined as the amount of enzyme required to produce 1 nmol of for maldehyde at 37 centigrade in 50mM HEPES, pH7.4, containing 0.05% Tween 20, 0.1 mM sodium L-ascorbate, 10 μM ferrous ammonium sulfate, 0.5 mM NAD <sup>+</sup> and 50 μM disodium oxoglutarate.
<b>Stability</b>	≥ 6 months
<b>Storage</b>	At -80 centigrade.

 Tel: 1-631-559-9269    1-516-512-3133

 Email: [info@creative-biomart.com](mailto:info@creative-biomart.com)     Fax: 1-631-938-8127

 45-1 Ramsey Road, Shirley, NY 11967, USA

**Storage Buffer** A solution in 50 mM HEPES, pH 7.4, with 150 mM sodium chloride and 20% glycerol

## GENE INFORMATION

**Gene Name** KDM4D lysine demethylase 4D [ Homo sapiens (human) ]

**Official Symbol** KDM4D

**Synonyms** KDM4D; lysine demethylase 4D; JMJD2D; lysine-specific demethylase 4D; [histone H3]-trimethyl-L-lysine(9) demethylase 4D; jmjC domain-containing histone demethylation protein 3D; jumonji domain containing 2D; jumonji domain-containing protein 2D; lysine (K)-specific demethylase 4D; EC 1.14.11.66

**Gene ID** 55693

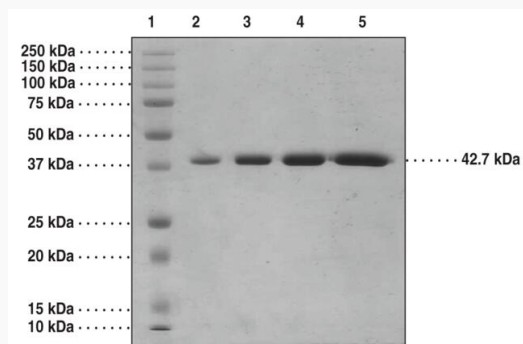
**mRNA Refseq** NM\_018039

**Protein Refseq** NP\_060509

**MIM** 609766

**UniProt ID** Q6B0I6

### SDS-PAGE analysis of KDM4D



Tel: 1-631-559-9269 1-516-512-3133

Email: [info@creative-biomart.com](mailto:info@creative-biomart.com) Fax: 1-631-938-8127

45-1 Ramsey Road, Shirley, NY 11967, USA



Lane 1: MW Ladder  
Lane 2: KDM4D (1 µg)  
Lane 3: KDM4D (2 µg)  
Lane 4: KDM4D (4 µg)  
Lane 5: KDM4D (6 µg)

 Tel: 1-631-559-9269 1-516-512-3133

 Email: [info@creative-biomart.com](mailto:info@creative-biomart.com)  Fax: 1-631-938-8127

 45-1 Ramsey Road, Shirley, NY 11967, USA