

# Recombinant Human KDM5A Protein (437-603 aa), His-tagged

Cat. No. KDM5A-1432H    Lot. No. (See product label)

## SPECIFICATION

<b>Product Overview</b>	Recombinant Human KDM5A Protein (437-603 aa) is produced by Yeast expression system. This protein is fused with a 6xHis tag at the N-terminal. Research Area: Transcription. Protein Description: Partial.
<b>Species</b>	Human
<b>Source</b>	Yeast
<b>ProteinLength</b>	437-603 aa
<b>Description</b>	Histone deethylase that specifically deethylates 'Lys-4' of histone H3, thereby playing a central role in histone code. Does not deethylate histone H3 'Lys-9', H3 'Lys-27', H3 'Lys-36', H3 'Lys-79' or H4 'Lys-20'. Deethylates trimethylated and dimethylated but not monomethylated H3 'Lys-4'. May stimulate transcription mediated by nuclear receptors. May be involved in transcriptional regulation of Hox proteins during cell differentiation. May participate in transcriptional repression of cytokines such as CXCL12. Plays a role in the regulation of the circadian rhythm and in maintaining the normal periodicity of the circadian clock. In a histone deethylase-independent manner, acts as a coactivator of the CLOCK-ARNTL/BMAL1-mediated transcriptional activation of PER1/2 and other clock-controlled genes and increases histone acetylation at PER1/2 promoters by inhibiting the activity of HDAC1.
<b>Form</b>	Tris-based buffer,50% glycerol
<b>Molecular Mass</b>	21.3 kDa

 Tel: 1-631-559-9269    1-516-512-3133

 Email: [info@creative-biomart.com](mailto:info@creative-biomart.com)     Fax: 1-631-938-8127

 45-1 Ramsey Road, Shirley, NY 11967, USA

<b>AA Sequence</b>	EYALSGWNLNNMPVLEQSVLAHINVDISGMKVPWLYVGMCFSSFCWHIEDHWSYSI NYLHWGEPKTWYGVP SHAAEQLEEVMRELAPELFESQPDLLHQLVTIMNPNVLM EH GVPVYRTNQCAGEFVVTFPRAYHSGFNQGYNFAEAVNFCTADWLPIGRQCVNH YR
<b>Purity</b>	> 90% as determined by SDS-PAGE.
<b>Notes</b>	Repeated freezing and thawing is not recommended. Store working aliquots at 4 centigrade for up to one week.
<b>Storage</b>	The shelf life is related to many factors, storage state, buffer ingredients, storage temperature and the stability of the protein itself. Generally, the shelf life of liquid form is 6 months at -20 centigrade/-80 centigrade. The shelf life of lyophilized form is 12 months at -20 centigrade/-80 centigrade.
<b>Concentration</b>	A hardcopy of COA with reconstitution instruction is sent along with the products.

## GENE INFORMATION

<b>Gene Name</b>	KDM5A lysine (K)-specific demethylase 5A [ Homo sapiens ]
<b>Official Symbol</b>	KDM5A
<b>Synonyms</b>	KDM5A; RBP2; RBBP2; RBBP-2; JARID1A;
<b>Gene ID</b>	5927
<b>mRNA Refseq</b>	NM_001042603
<b>Protein Refseq</b>	NP_001036068
<b>MIM</b>	180202

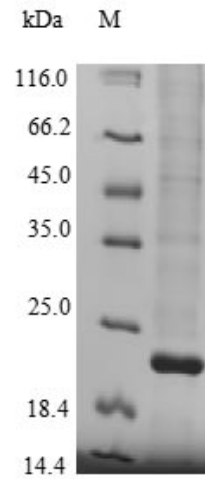
 Tel: 1-631-559-9269 1-516-512-3133

 Email: [info@creative-biomart.com](mailto:info@creative-biomart.com)  Fax: 1-631-938-8127

 45-1 Ramsey Road, Shirley, NY 11967, USA

UniProt ID

P29375



(Tris-Glycine gel) Discontinuous SDS-PAGE (reduced) with 5% enrichment gel and 15% separation gel.

 Tel: 1-631-559-9269 1-516-512-3133

 Email: [info@creative-biomart.com](mailto:info@creative-biomart.com)  Fax: 1-631-938-8127

 45-1 Ramsey Road, Shirley, NY 11967, USA