

Recombinant Human KDM5B protein, His-tagged

Cat. No. KDM5B-3798H Lot. No. (See product label)

SPECIFICATION

Product Overview	Recombinant Human KDM5B protein(190-309 aa), fused with N-terminal His tag, was expressed in E.coli.
Species	Human
Source	E.coli
ProteinLength	190-309 aa
Form	The purified protein was lyophilized from sterile phosphate-buffered saline (PBS: 58 mM Na ₂ HPO ₄ , 17 mM NaH ₂ PO ₄ , 68 mM NaCl, pH 7.4). Prior to lyophilization, 5% (w/v) trehalose and 5% (w/v) mannitol were incorporated as cryoprotective excipients.
AASequence	SLRCLQKPNLTTDTKDKEYKPHDIPQRQSVQPSETCPPARRAKRMRAEAMNIKIEPE ETTEARTHNLRRRMGCPTPKCENEKEMKSSIKQEPIERKDYIVENEKEKPKSRSKKA TNAVDL
Purity	85%, by SDS-PAGE with Coomassie Brilliant Blue staining.
Storage	Store at 2-8°C for 1-2 weeks. Aliquot and store at -20°C to -80°C for up to 3 months, reconstitution with sterile water and addition of an equal volume of glycerol. Avoid repeat freeze-thaw cycles.
Reconstitution	Dissolve the product in 200 µl sterile water to achieve a working concentration of 0.25

 Tel: 1-631-559-9269 1-516-512-3133

 Email: info@creative-biomart.com  Fax: 1-631-938-8127

 45-1 Ramsey Road, Shirley, NY 11967, USA

g/μl. If experimental compatibility allows, mix the aqueous solution with an equal volume of glycerol (1:1 ratio) after initial reconstitution.

GENE INFORMATION

Gene Name [KDM5B lysine \(K\)-specific demethylase 5B \[Homo sapiens \]](#)

Official Symbol [KDM5B](#)

Synonyms

KDM5B; lysine (K)-specific demethylase 5B; JARID1B, jumonji, AT rich interactive domain 1B , Jumonji, AT rich interactive domain 1B (RBP2 like); lysine-specific demethylase 5B; cancer/testis antigen 31; CT31; PLU 1; RBBP2H1A; RBP2-H1; histone demethylase JARID1B; putative DNA/chromatin binding motif; jumonji, AT rich interactive domain 1B; jumonji/ARID domain-containing protein 1B; retinoblastoma-binding protein 2 homolog 1; retinoblastoma-binding protein 2, homolog 1A; PLU1; PUT1; PLU-1; JARID1B; FLJ10538; FLJ12459; FLJ12491; FLJ16281; FLJ23670;

Gene ID [10765](#)

mRNA Refseq [NM_006618](#)

Protein Refseq [NP_006609](#)

MIM [605393](#)

UniProt ID [Q9UGL1](#)

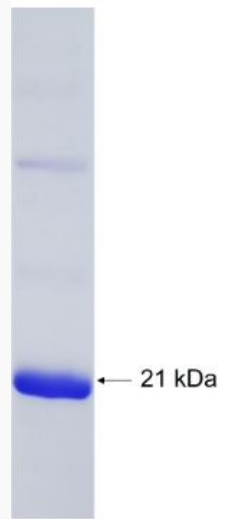
 Tel: 1-631-559-9269 1-516-512-3133

 Email: info@creative-biomart.com  Fax: 1-631-938-8127

 45-1 Ramsey Road, Shirley, NY 11967, USA



SDS-PAGE



Tel: 1-631-559-9269 1-516-512-3133

Email: info@creative-biomart.com Fax: 1-631-938-8127

45-1 Ramsey Road, Shirley, NY 11967, USA