

# Recombinant Human KDM6A protein(1095-1258aa), His&Myc-tagged

Cat. No. KDM6A-8124H Lot. No. (See product label)

## SPECIFICATION

<b>Product Overview</b>	Recombinant Human KDM6A protein(O15550)(1095-1258aa), fused with N-terminal His tag and C-terminal Myc tag, was expressed in E.coli.
<b>Species</b>	Human
<b>Source</b>	E.coli
<b>ProteinLength</b>	1095-1258aa
<b>Form</b>	If the delivery form is liquid, the default storage buffer is Tris/PBS-based buffer, 5%-50% glycerol. If the delivery form is lyophilized powder, the buffer before lyophilization is Tris/PBS-based buffer, 6% Trehalose, pH 8.0.
<b>Molecular Mass</b>	26.2 kDa
<b>Purity</b>	Greater than 90% as determined by SDS-PAGE.
<b>Storage</b>	Store at -20°C/-80°C upon receipt, aliquoting is necessary for multiple use. Avoid repeated freeze-thaw cycles.
<b>Reconstitution</b>	We recommend that this vial be briefly centrifuged prior to opening to bring the contents to the bottom. Please reconstitute protein in deionized sterile water to a concentration of 0.1-1.0 mg/mL. We recommend to add 5-50% of glycerol (final concentration) and aliquot for long-term storage at -20°C/-80°C.

 Tel: 1-631-559-9269 1-516-512-3133

 Email: [info@creative-biomart.com](mailto:info@creative-biomart.com)  Fax: 1-631-938-8127

 45-1 Ramsey Road, Shirley, NY 11967, USA

**AA Sequence** KWKLQLHELTCLPAFVRVVSAGNLLSHVGHITLGMNTVQLYMKVPGSRTPGHQENN  
 NFCSVNINIGPGDCEWFVPEGYWGVLNDFCEKNNLNFLMGSWWPNLEDLYEANV  
 PVYRFIQRPGDLVWINAGTVHWVQAIGWCNNIAWNVGPLTACQYKLAVERYEW

## GENE INFORMATION

**Gene Name** [KDM6A lysine \(K\)-specific demethylase 6A \[ Homo sapiens \]](#)

**Official Symbol** [KDM6A](#)

**Synonyms**

KDM6A; lysine (K)-specific demethylase 6A; ubiquitously transcribed tetratricopeptide repeat, X chromosome , UTX; lysine-specific demethylase 6A; histone demethylase UTX; ubiquitously-transcribed TPR gene on the X chromosome; ubiquitously transcribed TPR protein on the X chromosome; ubiquitously-transcribed TPR protein on the X chromosome; ubiquitously transcribed tetratricopeptide repeat protein X-linked; ubiquitously transcribed X chromosome tetratricopeptide repeat protein; ubiquitously-transcribed X chromosome tetratricopeptide repeat protein; bA386N14.2 (ubiquitously transcribed X chromosome tetratricopeptide repeat protein (UTX)); UTX; KABUK2; bA386N14.2; MGC141941; DKFZp686A03225;

**Gene ID** [7403](#)

**mRNA Refseq** [NM\\_021140](#)

**Protein Refseq** [NP\\_066963](#)

**MIM** [300128](#)

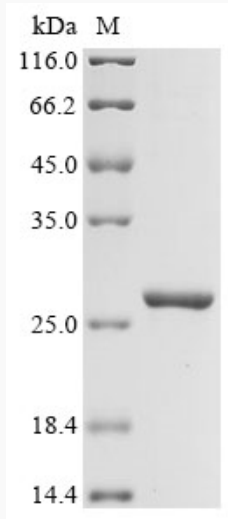
**UniProt ID** [O15550](#)

 Tel: 1-631-559-9269 1-516-512-3133

 Email: [info@creative-biomart.com](mailto:info@creative-biomart.com)  Fax: 1-631-938-8127

 45-1 Ramsey Road, Shirley, NY 11967, USA

**SDS-PAGE**



 Tel: 1-631-559-9269 1-516-512-3133

 Email: [info@creative-biomart.com](mailto:info@creative-biomart.com)  Fax: 1-631-938-8127

 45-1 Ramsey Road, Shirley, NY 11967, USA