

Recombinant Human KDM6B protein(1176-1505aa), His-tagged

Cat. No. KDM6B-5162H Lot. No. (See product label)

SPECIFICATION

Product Overview	Recombinant Human KDM6B protein(O15054)(1176-1505aa), fused with N-terminal His tag, was expressed in E.coli.
Species	Human
Source	E.coli
ProteinLength	1176-1505aa
Form	If the delivery form is liquid, the default storage buffer is Tris/PBS-based buffer, 5%-50% glycerol. If the delivery form is lyophilized powder, the buffer before lyophilization is Tris/PBS-based buffer, 6% Trehalose, pH 8.0.
Molecular Mass	41.5 kDa
Purity	Greater than 85% as determined by SDS-PAGE.
Storage	Store at -20°C/-80°C upon receipt, aliquoting is necessary for mutiple use. Avoid repeated freeze-thaw cycles.
Reconstitution	We recommend that this vial be briefly centrifuged prior to opening to bring the contents to the bottom. Please reconstitute protein in deionized sterile water to a concentration of 0.1-1.0 mg/mL. We recommend to add 5-50% of glycerol (final concentration) and aliquot for long-term storage at -20°C/-80°C.

 Tel: 1-631-559-9269 1-516-512-3133

 Email: info@creative-biomart.com  Fax: 1-631-938-8127

 45-1 Ramsey Road, Shirley, NY 11967, USA

AA Sequence

LPREKLNPPTPSIYLESKRDAFSPVLLQFCTDPRNPITVIRGLAGSLRLNLGLFSTKTL
 VEASGEHTVEVRTQVQQPSDENWDLTGTRQIWPCSSRSHTTIKAKYAQYQASSFQ
 ESLQEEKESEDEESEEPDSTTGTPSSAPDPKNHHIIKFGTNIIDLSAKRWKPQLQE
 LLKLPAFMRVTSTGNMLSHVGHITLGMNTVQLYMKVPGSRTPGHQENNNFCSVNINI
 GPGDCEWFAVHEHYWETISAFCDRHGVDYLTGSWWPILDDLYASNIPVYRFVQRP
 GDLVWINAGTVHVVQATGWCNNIAWNVGPLTAYQYQLALERYEWNEV

GENE INFORMATION

Gene Name [KDM6B lysine \(K\)-specific demethylase 6B \[Homo sapiens \]](#)

Official Symbol [KDM6B](#)

Synonyms [KDM6B](#); lysine (K)-specific demethylase 6B; [JMJD3](#), jumonji domain containing 3 , jumonji domain containing 3, histone lysine demethylase; lysine-specific demethylase 6B; [KIAA0346](#); lysine demethylase 6B; [jmiC](#) domain-containing protein 3; jumonji domain-containing protein 3; jumonji domain containing 3, histone lysine demethylase; [JMJD3](#);

Gene ID [23135](#)

mRNA Refseq [NM_001080424](#)

Protein Refseq [NP_001073893](#)

MIM [611577](#)

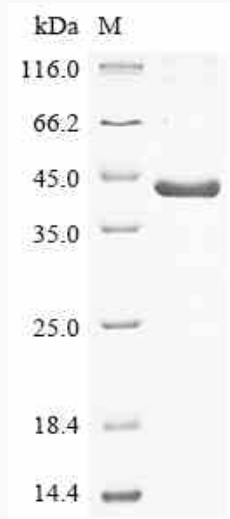
UniProt ID [O15054](#)

 Tel: 1-631-559-9269 1-516-512-3133

 Email: info@creative-biomart.com  Fax: 1-631-938-8127

 45-1 Ramsey Road, Shirley, NY 11967, USA

SDS-PAGE



 Tel: 1-631-559-9269 1-516-512-3133

 Email: info@creative-biomart.com  Fax: 1-631-938-8127

 45-1 Ramsey Road, Shirley, NY 11967, USA