

Recombinant Full Length Human KDM8 Protein, C-Flag-tagged

Cat. No. KDM8-1949HFL Lot. No. (See product label)

SPECIFICATION

Product Overview	Recombinant Full Length Human KDM8 Protein, fused to Flag-tag at C-terminus, was expressed in Mammalian cells.
Species	Human
Source	Mammalian Cells
Description	This gene likely encodes a histone lysine demethylase. Studies of a similar protein in mouse indicate a potential role for this protein as a tumor suppressor. Alternatively spliced transcript variants have been described.
Form	25 mM Tris HCl, pH 7.3, 100 mM glycine, 10% glycerol.
Molecular Mass	50.7 kDa
AA Sequence	MSREKCSPPGEGAEEGRGSEASGLKASAGHGTEPAGGGPMAGDTHCPAEPLAREG TLWEALRALLPHSKED LKLDLGEKVERS SVTLLQRATELFYEGRRDECLQSSEVILD YSWEKLNLTGTWQDVVDKDWRRVYAIGCLLK ALCLCQAPEDANTVAAALRVCDMGLL MGAAAILGDILLKVAAILQTHLPGRPARGLPEQPCTKKARADH GLIPDVKLEKTVPR LHRPSLQHFREQFLVGRPVILKGVADHWPCMQKWSLEYIQEIAGCRTVPVEVGSR YTDEEWSQTLMTVNEFISKYIVNEPRDVG YLAHQHQLFDQIPELKQDISIPDYCSLGDG EEEEITINAWFG PQGTISPLHQDPQQNFLVQVMGRKYIRLYSPQESGALYPHDTHLL HNTSQVDVENPDLEKFPKFAKAPFL SCILSPGEILFIPVKYWHYVRALDLSFSVSFW WS TRTRPLEQKLISEEDLAANDILDYKDDDDKV

 Tel: 1-631-559-9269 1-516-512-3133

 Email: info@creative-biomart.com  Fax: 1-631-938-8127

 45-1 Ramsey Road, Shirley, NY 11967, USA

Purity	> 80% as determined by SDS-PAGE and Coomassie blue staining.
Stability	Stable for 12 months from the date of receipt of the product under proper storage and handling conditions. Avoid repeated freeze-thaw cycles.
Storage	Store at -80 centigrade.
Concentration	>50 ug/mL as determined by microplate BCA method.
Preparation	Recombinant protein was captured through anti-DDK affinity column followed by conventional chromatography steps.
Full Length	Full L.

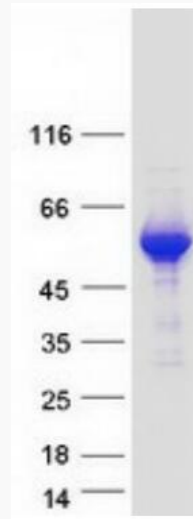
GENE INFORMATION

Gene Name	KDM8 lysine demethylase 8 [Homo sapiens (human)]
Official Symbol	KDM8
Synonyms	JMJD5
Gene ID	79831
mRNA Refseq	NM_001145348.2
Protein Refseq	NP_001138820
MIM	611917
UniProt ID	Q8N371

 Tel: 1-631-559-9269 1-516-512-3133

 Email: info@creative-biomart.com  Fax: 1-631-938-8127

 45-1 Ramsey Road, Shirley, NY 11967, USA



Coomassie blue staining of purified KDM8 protein.

 Tel: 1-631-559-9269 1-516-512-3133

 Email: info@creative-biomart.com  Fax: 1-631-938-8127

 45-1 Ramsey Road, Shirley, NY 11967, USA