

# Recombinant Human KDM8 Protein, Myc/DDK-tagged, C13 and N15-labeled

**Cat. No.** KDM8-4703H    **Lot. No.** (See product label)

## SPECIFICATION

<b>Product Overview</b>	JMJD5 MS Standard C13 and N15-labeled recombinant protein (NP_079049) with a C-terminal MYC/DDK tag, was expressed in HEK293 cells.
<b>Species</b>	Human
<b>Source</b>	HEK293
<b>Description</b>	This gene likely encodes a histone lysine demethylase. Studies of a similar protein in mouse indicate a potential role for this protein as a tumor suppressor. Alternatively spliced transcript variants have been described.
<b>Molecular Mass</b>	47.3 kDa
<b>AA Sequence</b>	MAGDTHCPAEPLAREGTLWEALRALLPHSKEDLKLDLGKVERSVVTL LQRATELFY EGRRDECLQSSEVILDYSWEKLN TGTWQDV DDKWRRVYAIGCLLKALCLCQAPEDA NTVAAALRVCDMGLLMGAA ILGDILLKVAAILQTHLPGKRPARGSLPEQPCTKKARA DHGLIPDVKLEKTV PRLHRPSLQHFREQFLVPGRPVILKGVADHWPCMQKWSLEYI QEIAGCRTVPVEVGSRYTDEEWSQTLMTVNEFISKYIVNEPRDVG YLAQHQLFDQIP ELKQDISIPDYCSLGDGEEEEITINAWFGPQGTISPLHQDPQQNFLVQVMGRKYIRLY SPQESGALYPHDTHLLHNTSQVDVENPDLEKFPKFAKAPFLSCILSPGEILFIPVKYW HYVRALDLSFSVSVFWWSTRTRPLEQKLISEEDLAANDILDYKDDDDKV
<b>Purity</b>	> 80% as determined by SDS-PAGE and Coomassie blue staining

 Tel: 1-631-559-9269    1-516-512-3133

 Email: [info@creative-biomart.com](mailto:info@creative-biomart.com)     Fax: 1-631-938-8127

 45-1 Ramsey Road, Shirley, NY 11967, USA

<b>Stability</b>	Stable for 3 months from receipt of products under proper storage and handling conditions.
<b>Storage</b>	Store at -80 centigrade. Avoid repeated freeze-thaw cycles.
<b>Concentration</b>	50 µg/mL as determined by BCA
<b>Storage Buffer</b>	100 mM glycine, 25 mM Tris-HCl, pH 7.3.

## GENE INFORMATION

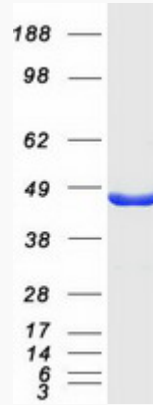
<b>Gene Name</b>	KDM8 lysine demethylase 8 [ Homo sapiens (human) ]
<b>Official Symbol</b>	KDM8
<b>Synonyms</b>	KDM8; lysine demethylase 8; JMJD5; bifunctional peptidase and arginyl-hydroxylase JMJD5; JmjC arginyl-hydroxylase; L-arginine (3R)-hydroxylase KDM8; arginyl C3-hydroxylase KDM8; jmjC domain-containing protein 5; jumonji C domain-containing protein 5; jumonji domain containing 5; jumonji domain-containing protein 5; lysine (K)-specific demethylase 8; lysine-specific demethylase 8; EC 1.14.11.27
<b>Gene ID</b>	79831
<b>mRNA Refseq</b>	NM_024773
<b>Protein Refseq</b>	NP_079049
<b>MIM</b>	611917
<b>UniProt ID</b>	Q8N371

 Tel: 1-631-559-9269 1-516-512-3133

 Email: [info@creative-biomart.com](mailto:info@creative-biomart.com)  Fax: 1-631-938-8127

 45-1 Ramsey Road, Shirley, NY 11967, USA

SDS-PAGE



 Tel: 1-631-559-9269 1-516-512-3133

 Email: [info@creative-biomart.com](mailto:info@creative-biomart.com)  Fax: 1-631-938-8127

 45-1 Ramsey Road, Shirley, NY 11967, USA