

Recombinant Human KDM8 Protein, Myc/DDK-tagged, C13 and N15-labeled

Cat. No. KDM8-6178H **Lot. No.** (See product label)

SPECIFICATION

Product Overview	JMJD5 MS Standard C13 and N15-labeled recombinant protein (NP_001138820) with a C-terminal MYC/DDK tag, was expressed in HEK293 cells.
Species	Human
Source	HEK293
Description	This gene likely encodes a histone lysine demethylase. Studies of a similar protein in mouse indicate a potential role for this protein as a tumor suppressor. Alternatively spliced transcript variants have been described.
Molecular Mass	50.7 kDa
AA Sequence	MSREKCSPEGEGAEEGRGSEASGLKASAGHGTEPAGGGPMAGDTHCPAEPLAREG TLWEALRALLPHSKEDLKLDELGEKVERSVVTLQLRATLQYEGRRDECLQSSEVILD YSWEKLNLTGTWQDVKDWRRVYAIGCLLKALCLCQAPEDANTVAAALRVCDMGLL MGAAILGDILLKVAAILQTHLPGKRPARGLPEQPCTKKARADHGLIPDVKLEKTVPR LHRPSLQHFREQFLVGRPVILKGVADHWPCMQKWSLEYIQEIAGCRTVPVEVGSR YTDEEWSQTLMTVNEFISKYIVNEPRDVGYLEAQHQLFDQIPELKQDISIPDYCSLGDG EEEEITINAWFGPQGTISPLHQDPQQNFLVQVMGRKYIRLYSPQESGALYPHDTHLL HNTSQVDVENPDLEKFPKFAKAPFLSCILSPGEILFIPVKYWHYVRALDLSFSVSVFWW STRTRPLEQKLISEEDLAANDILDYKDDDDKV
Purity	> 80% as determined by SDS-PAGE and Coomassie blue staining

 Tel: 1-631-559-9269 1-516-512-3133

 Email: info@creative-biomart.com  Fax: 1-631-938-8127

 45-1 Ramsey Road, Shirley, NY 11967, USA

Stability	Stable for 3 months from receipt of products under proper storage and handling conditions.
Storage	Store at -80 centigrade. Avoid repeated freeze-thaw cycles.
Concentration	50 µg/mL as determined by BCA
Storage Buffer	100 mM glycine, 25 mM Tris-HCl, pH 7.3.

GENE INFORMATION

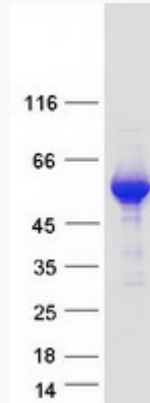
Gene Name	KDM8 lysine demethylase 8 [Homo sapiens (human)]
Official Symbol	KDM8
Synonyms	KDM8; lysine demethylase 8; JMJD5; bifunctional peptidase and arginyl-hydroxylase JMJD5; JmjC arginyl-hydroxylase; L-arginine (3R)-hydroxylase KDM8; arginyl C3-hydroxylase KDM8; jmjC domain-containing protein 5; jumonji C domain-containing protein 5; jumonji domain containing 5; jumonji domain-containing protein 5; lysine (K)-specific demethylase 8; lysine-specific demethylase 8; EC 1.14.11.27
Gene ID	79831
mRNA Refseq	NM_001145348
Protein Refseq	NP_001138820
MIM	611917
UniProt ID	Q8N371

 Tel: 1-631-559-9269 1-516-512-3133

 Email: info@creative-biomart.com  Fax: 1-631-938-8127

 45-1 Ramsey Road, Shirley, NY 11967, USA

SDS-PAGE



 Tel: 1-631-559-9269 1-516-512-3133

 Email: info@creative-biomart.com  Fax: 1-631-938-8127

 45-1 Ramsey Road, Shirley, NY 11967, USA