

# Recombinant Human KDR Protein (20-764aa), C-hlgG-His tagged

Cat. No. KDR-01H Lot. No. (See product label)

## SPECIFICATION

<b>Product Overview</b>	Recombinant human KDR protein (20-764aa), fused to hlgG-His-tag at Cterminus, was expressed in insect cell and purified by using conventional chromatography techniques.
<b>Species</b>	Human
<b>Source</b>	Insect Cells
<b>ProteinLength</b>	20-764aa
<b>Description</b>	Tyrosine-protein kinase that acts as a cell-surface receptor for VEGFA, VEGFC and VEGFD. Plays an essential role in the regulation of angiogenesis, vascular development, vascular permeability, and embryonic hematopoiesis. Promotes proliferation, survival, migration and differentiation of endothelial cells. Promotes reorganization of the actin cytoskeleton.
<b>Form</b>	Liquid
<b>Molecular Mass</b>	110.5 kDa (987aa)
<b>AA Sequence</b>	< ADP> ASVGLPSVSLDLPRLSIQKDILTIKANTTLQITCRGQRDLDWLWPNNQSGSE QRVEVTECSDGLFCKTLTIPKVIGNDTGAYKCFYRETDLASVIYVYVQDYRSPFIASV SDQHGVVYITENKNKTVVIPCLGSISNLNVSLCARYPEKRFVDPGNRISWDSKKGFTI PSYMISYAGMVFCEAKINDESYSQSIMYIVVVVGYRIYDVVLSPSHGIELSVGEKLVLNC

 Tel: 1-631-559-9269 1-516-512-3133

 Email: [info@creative-biomart.com](mailto:info@creative-biomart.com)  Fax: 1-631-938-8127

 45-1 Ramsey Road, Shirley, NY 11967, USA

TARTELVGIDFNWEYPSSKHQHKLVNRDLKTQSGSEMKKFLSTLTIDGVTRSDQ  
 GLYTCAASSGLMTKKNSTFVRVHEKPFVAFGSGMESLVEATVGERVRIPAKYLGY  
 PPEIKWYKNGIPLESNHTIKAGHVLTIMEVSRDTGNYTVILTNPISKEKQSHVVSLV  
 YVPPQIGEKSLISPVDSYQYGTQTTLCTVYAIPPPHHIHWYWQLEEECANEPSQAV  
 SVTNPYPCEEWRSVEDFQGGNKIEVNKNQFALIEGKNKTVSTLVIQAANVSALYKCE  
 AVNKVGRGERVISFHVTRGPEITLQPDMQPTEQESVSLWCTADRSTFENLTWYKLG  
 PQPLPIHVGELPTPVCKNLDLWKLNATMFSNSTNDILIMELKNASLQDQGDYVCLA  
 QDRKTKKRHCVVRQLTVLERVAPTITGNLENQTTSIGESIEVSCTASGNPPPQIMWF  
 KDNETLVEDSGIVLKDGNRNLTIIRVRKEDEGLYTCQACSVLGCACVEAFFIIEGAQE  
 KTNLE< LEPKSCDKTHTCPPCPAPPELLGGPSVFLFPPKPKDTLMISRTPEVTCVVVD  
 VSHEDPEVKFNWYVDGVEVHNAKTKPREEQYNSTYRVVSVLTVLHQDWLNGKEYK  
 CKVSNKALPAPIEKTISKAKGQPREPQVYTLPPSRDELTKNQVSLTCLVKGFYPSDIA  
 VEWESNGQPENNYKTTPPVLDSDGSFFLYSKLTVDKSRWQQGNVFCFSVMHEALH  
 NHYTQKSLSLSPGKHHHHHH>

**Endotoxin** < 1.0 EU/μg of the protein by the LAL method.

**Purity** > 90% by SDS-PAGE

**Applications** SDS-PAGE

**Notes** For research use only. This product is not intended or approved for human, diagnostics or veterinary use.

**Storage** Can be stored at +2 to +8 centigrade for 1 week. For long term storage, aliquot and store at -20 to -80 centigrade. Avoid repeated freezing and thawing cycles.

**Concentration** 0.5 mg/mL (determined by absorbance at 280nm)

**Storage Buffer** Phosphate-Buffered Saline (pH 7.4) containing 10% glycerol

 Tel: 1-631-559-9269 1-516-512-3133

 Email: [info@creative-biomart.com](mailto:info@creative-biomart.com)  Fax: 1-631-938-8127

 45-1 Ramsey Road, Shirley, NY 11967, USA

## GENE INFORMATION

<b>Gene Name</b>	KDR kinase insert domain receptor (a type III receptor tyrosine kinase) [ Homo sapiens (human) ]
<b>Official Symbol</b>	KDR
<b>Synonyms</b>	KDR; kinase insert domain receptor (a type III receptor tyrosine kinase); vascular endothelial growth factor receptor 2; CD309; FLK1; VEGFR; VEGFR2; soluble VEGFR2; fetal liver kinase 1; fetal liver kinase-1; protein-tyrosine kinase receptor Flk-1; tyrosine kinase growth factor receptor;
<b>Gene ID</b>	3791
<b>mRNA Refseq</b>	NM_002253
<b>Protein Refseq</b>	NP_002244
<b>MIM</b>	191306
<b>UniProt ID</b>	P35968

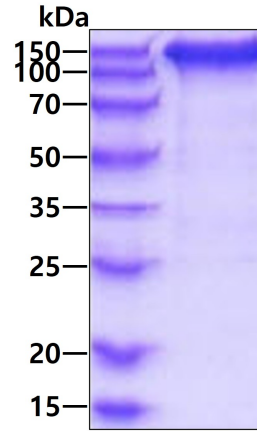
 Tel: 1-631-559-9269 1-516-512-3133

 Email: [info@creative-biomart.com](mailto:info@creative-biomart.com)  Fax: 1-631-938-8127

 45-1 Ramsey Road, Shirley, NY 11967, USA



**SDS-PAGE**



3  $\mu$ g by SDS-PAGE under reducing condition and visualized by coomassie blue stain.

Tel: 1-631-559-9269 1-516-512-3133

Email: [info@creative-biomart.com](mailto:info@creative-biomart.com) Fax: 1-631-938-8127

45-1 Ramsey Road, Shirley, NY 11967, USA