

Recombinant Human KDR Protein (Met1-Glu764), C-His tagged

Cat. No. KDR-4332H Lot. No. (See product label)

SPECIFICATION

Product Overview	Recombinant human KDR (Met1-Glu764) fused with the C-terminal His tag was expressed in Mammalian cells.
Species	Human
Source	Mammalian Cells
ProteinLength	Met1-Glu764
Form	Lyophilized powder/frozen liquid
Molecular Mass	86.24 kDa
Endotoxin	< 1.0 EU/μg of the protein as determined by the LAL method.
Purity	>90% as determined by SDS-PAGE.
Notes	For research use only.
Storage	Use a manual defrost freezer and avoid repeated freeze thaw cycles. Store at 2 to 8 centigrade for one week. Store at -20 to -80 centigrade for twelve months from the date of receipt.
Storage Buffer	Supplied as solution form in PBS, pH 7.5 or lyophilized from PBS, pH 7.5.

 Tel: 1-631-559-9269 1-516-512-3133

 Email: info@creative-biomart.com  Fax: 1-631-938-8127

 45-1 Ramsey Road, Shirley, NY 11967, USA

Reconstitution Reconstitute in sterile water for a stock solution.

Shipping They are shipped out with dry ice/blue ice unless customers require otherwise.

GENE INFORMATION

Gene Name KDR kinase insert domain receptor (a type III receptor tyrosine kinase) [Homo sapiens (human)]

Official Symbol KDR

Synonyms KDR; kinase insert domain receptor (a type III receptor tyrosine kinase); vascular endothelial growth factor receptor 2; CD309; FLK1; VEGFR; VEGFR2; soluble VEGFR2; fetal liver kinase 1; fetal liver kinase-1; protein-tyrosine kinase receptor Flk-1; tyrosine kinase growth factor receptor;

Gene ID 3791

mRNA Refseq NM_002253

Protein Refseq NP_002244

MIM 191306

UniProt ID P35968

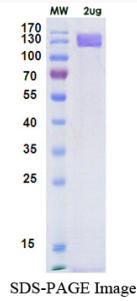
 Tel: 1-631-559-9269 1-516-512-3133

 Email: info@creative-biomart.com  Fax: 1-631-938-8127

 45-1 Ramsey Road, Shirley, NY 11967, USA



SDS-PAGE



Tel: 1-631-559-9269 1-516-512-3133

Email: info@creative-biomart.com Fax: 1-631-938-8127

45-1 Ramsey Road, Shirley, NY 11967, USA